

USER GUIDE

Rev.: 0.8
Date: 2004/11/24

. English	3
. Danish	16
. Dutch.....	21
. Finnish	26
. French	31
. German	36
. Italian.....	41
. Japanese.....	46
. Korean.....	51
. Norwegian	56
. Polish	61
. Portuguese	66
. Swedish.....	71
. Russian	77
. Spain	82
. Simplified Chinese	87
. Traditional Chinese	92

FCC Statement

The changes or modifications not expressly approved by the party responsible for compliance could void the user's authority to operate the equipment.

User Information

This device complies with part 15 of FCC Rules. Operation is subject to the following two conditions:

- (1) This device may not cause harmful interference, and
- (2) This device must accept any interference received, including interference that may cause undesired operation.

NOTE

This equipment has been tested and found to comply with the limits for a Class B digital device, pursuant to Part 15 of the FCC Rules. These limits are designed to provide reasonable protection against harmful interference in a residential installation. This equipment generates, uses and can radiate radio frequency energy and, if not installed and used in accordance with the instructions, may cause harmful interference to radio communications. However, there is no guarantee that interference will not occur in a particular installation. If this equipment does cause harmful interference to radio or television reception, which can be determined by turning the equipment off and on, the user is encouraged to try to correct the interference by one or more of the following measures:

- Reorient or relocate the receiving antenna.
- Increase the separation between the equipment and receiver.
- Connect the equipment into an outlet on a circuit different from that to which the receiver is connected.
- Consult the dealer or an experienced radio/TV technician for help.

To comply with FCC RF exposure requirements, this device and its antenna must be co-located or operating in the conjunction with any other antenna or transmitter.

FCC ID : QW3-BTBA02/QW3-BTBA02P1/QW3-BTBA02B/QW3-BTBA02B1

The Bluetooth word mark and logos are owned by the Bluetooth SIG, Inc.. Other trademarks and trade names are those of their respective owners.

. English

1. Bluetooth software installation and basic operations

USB Adapter Installation

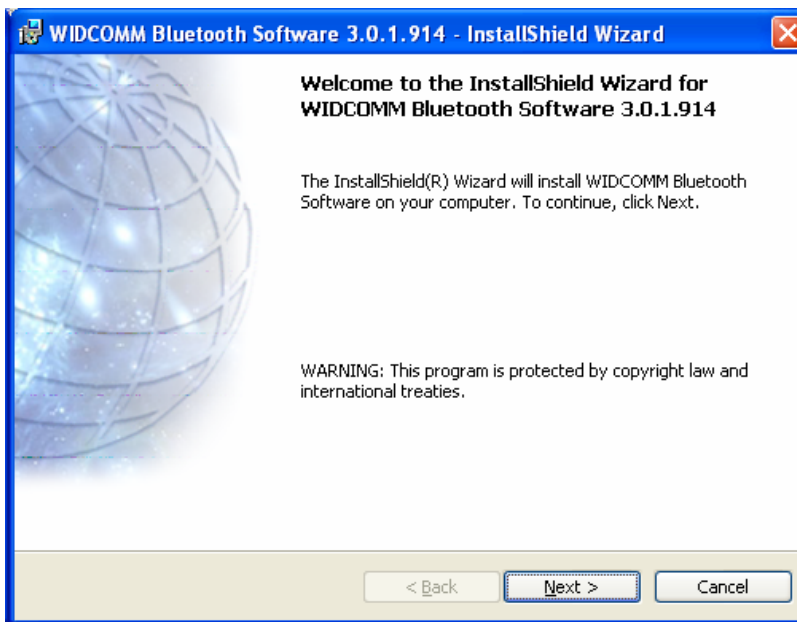
1. Windows Bluetooth Software Installation

NOTE: Please install the USB Bluetooth software before inserting the USB adapter!

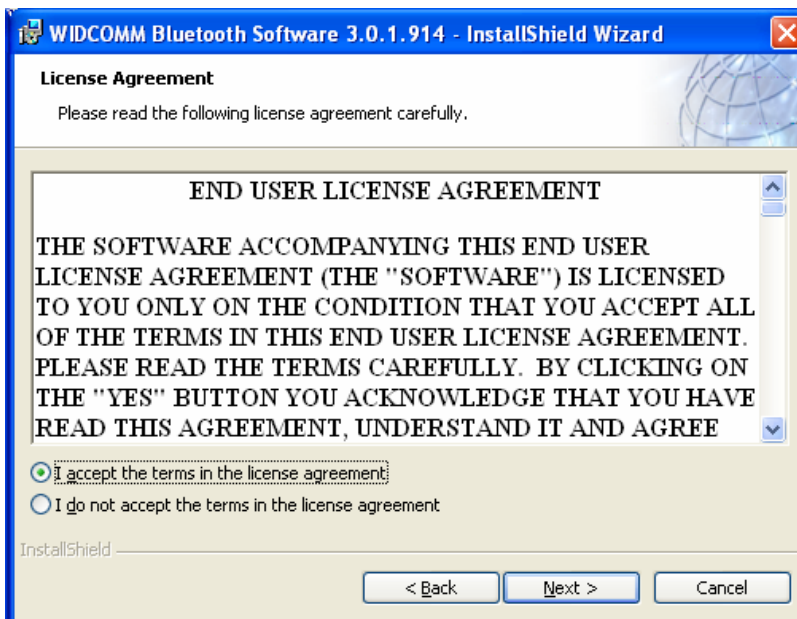
- Place the installation CD-ROM into the pc, the setup should start automatically. If the setup does not start please go to Windows Explorer, locate the CD-ROM and run '**autorun.exe**'.



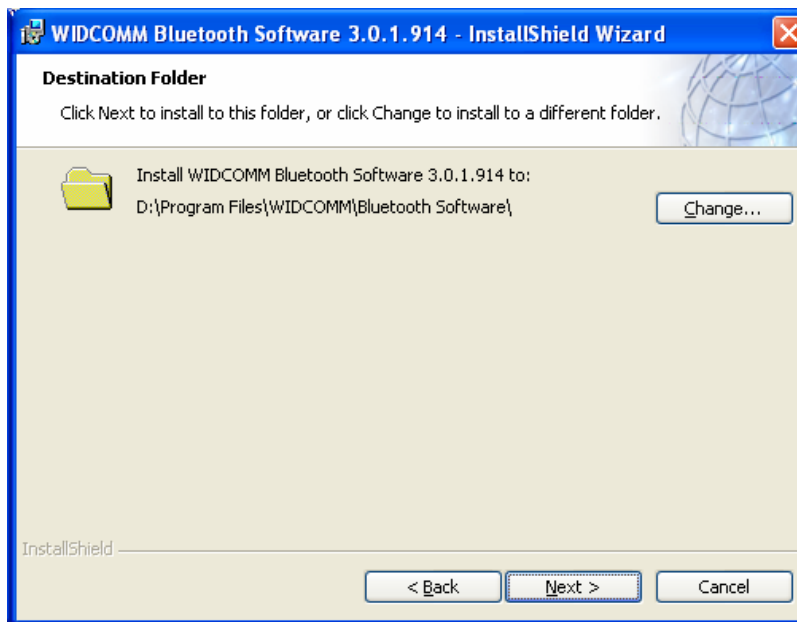
- Choose '**Install Drivers and Application Software**'.
- The InstallShield Wizard will start.



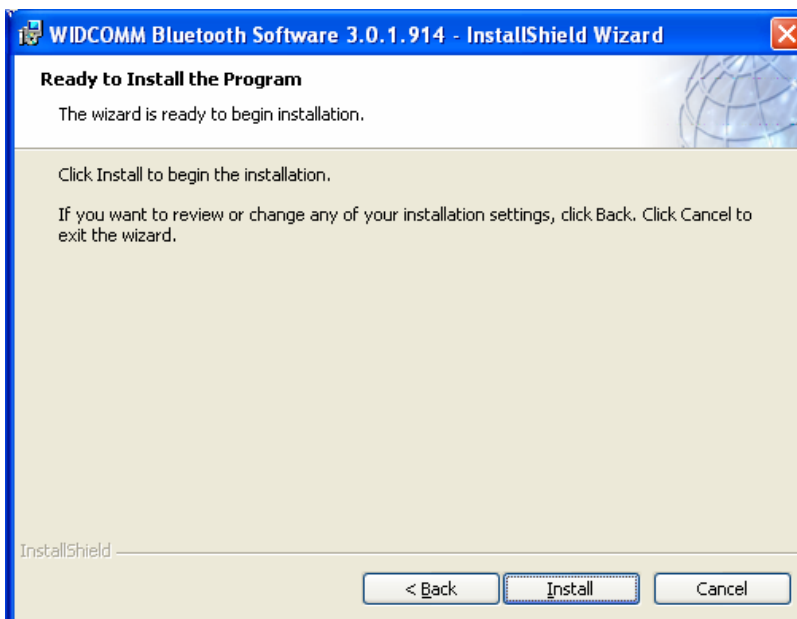
- On the Welcome screen click **Next** to continue.



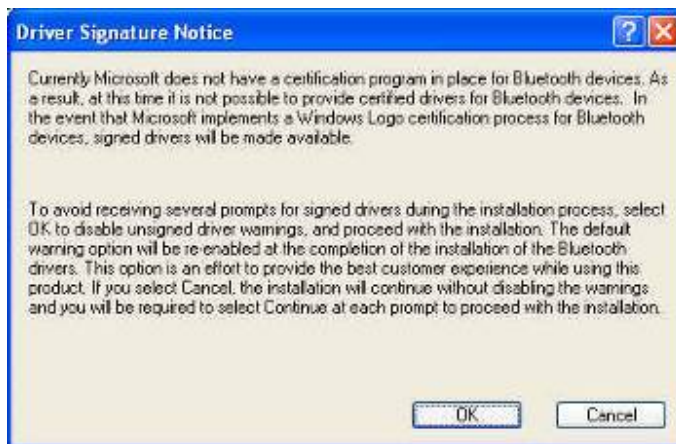
- Read the License Agreement and select '**I accept the terms in the license agreement**'. Click **Next**.



- Click **Next** to accept the default destination folder, click **Change** to browse to a new destination folder for the Bluetooth software.



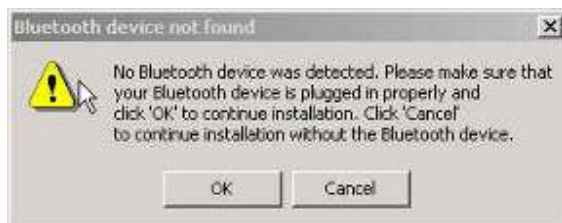
- Click **Install** to begin the installation of the bluetooth software.



- For Windows 2000/XP users, a "**Driver Signature Notice**" window appears, please click the "**OK**" button.



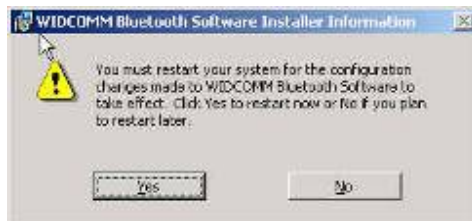
- For Windows 98 users, a window appears which asks you to insert the Windows 98 CD-Rom. Insert the original Windows 98 CD Rom and click "**OK**".



- The "**Bluetooth device not found**" window appears. Insert the USB Bluetooth adapter in the USB port. Click "**OK**".



- Click **Finish** to complete the bluetooth software installation.



- Click '**Yes**' to restart the computer and complete the installation.



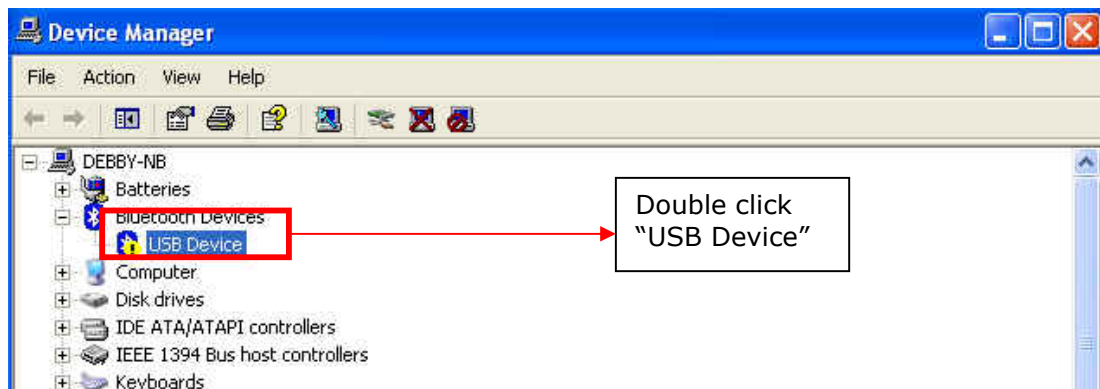
- Click start/(settings)/controlpanel/system/devicemanager. Check under 'Universal Serial Bus controllers' that a 'USB Bluetooth Device' is installed.
- If the information is not present please unplug the adapter, now plug in the adapter to initiate the driver.

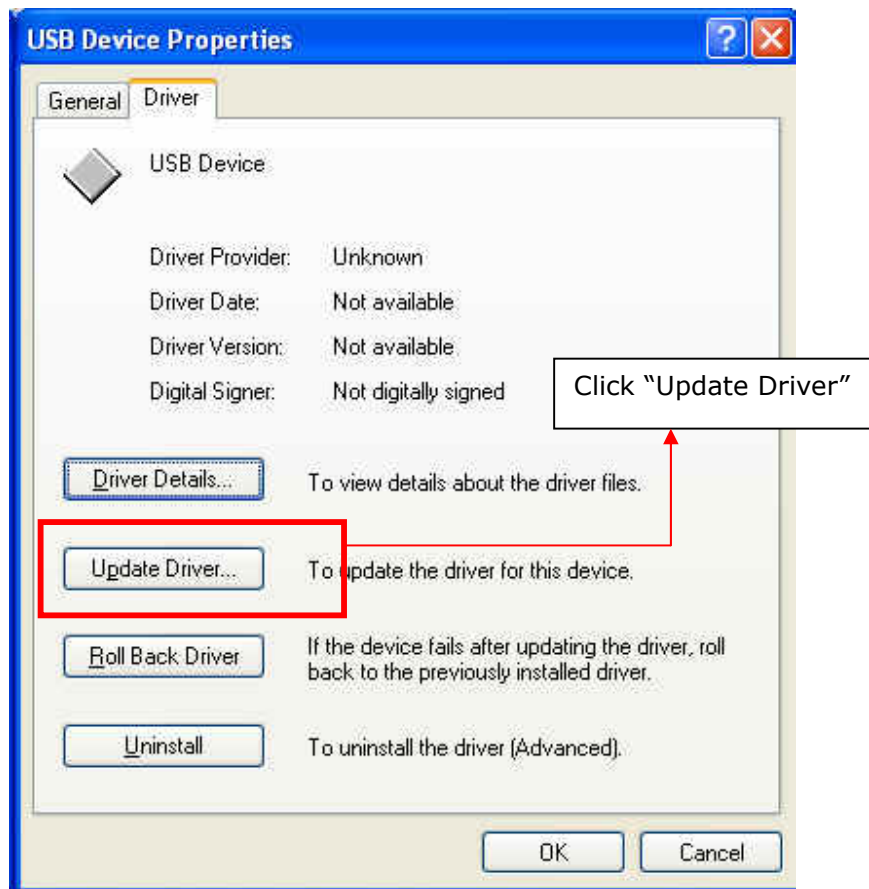
Troubleshooting

1.1 If the following screen appears, please follow the instruction below to update the driver for your Bluetooth device.

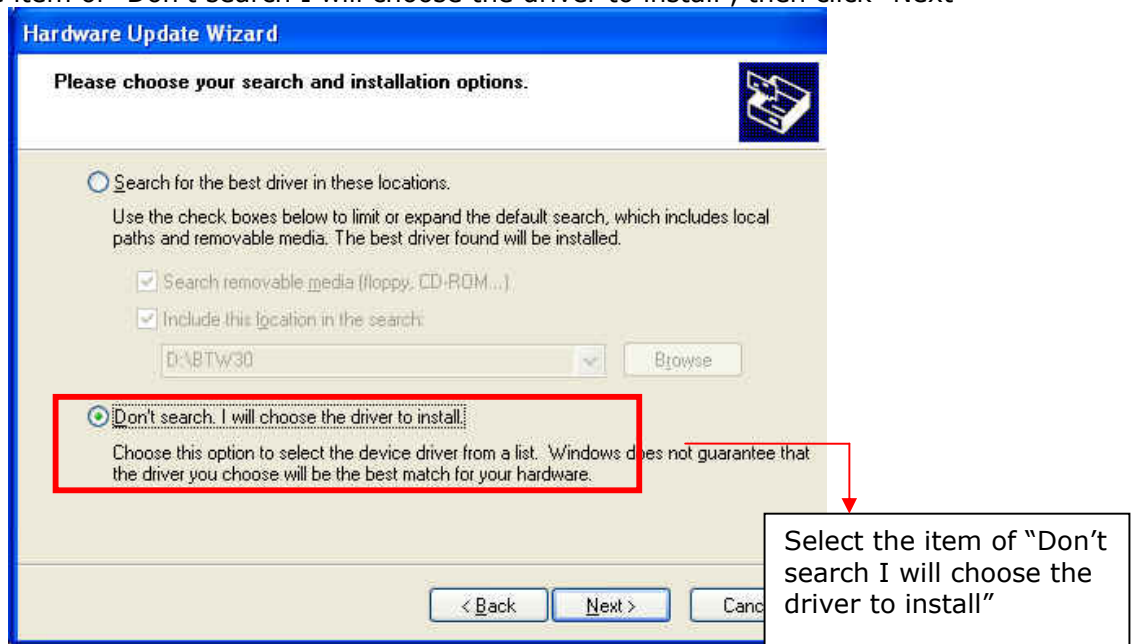


1.2 Go to "Control Panel" and find the unknown USB device, then double click "USB device" to update the driver.

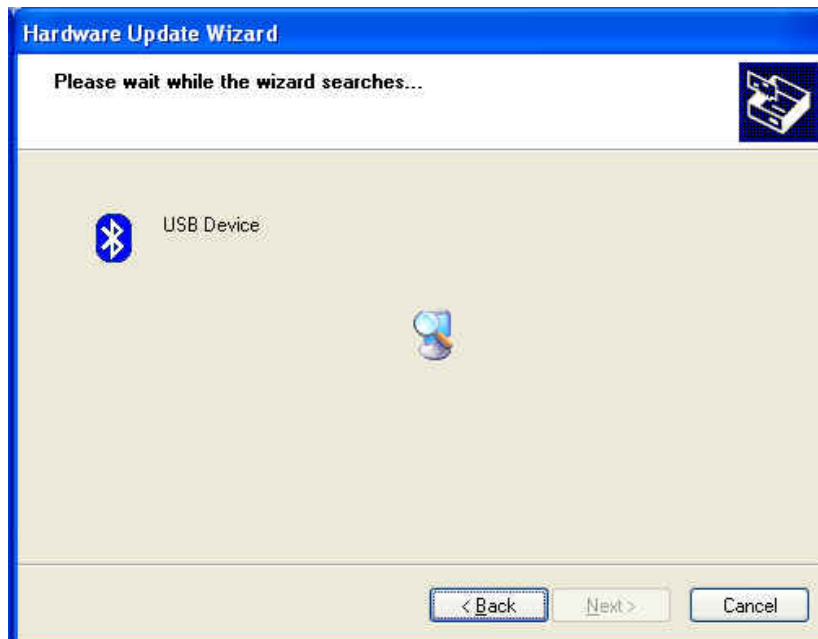
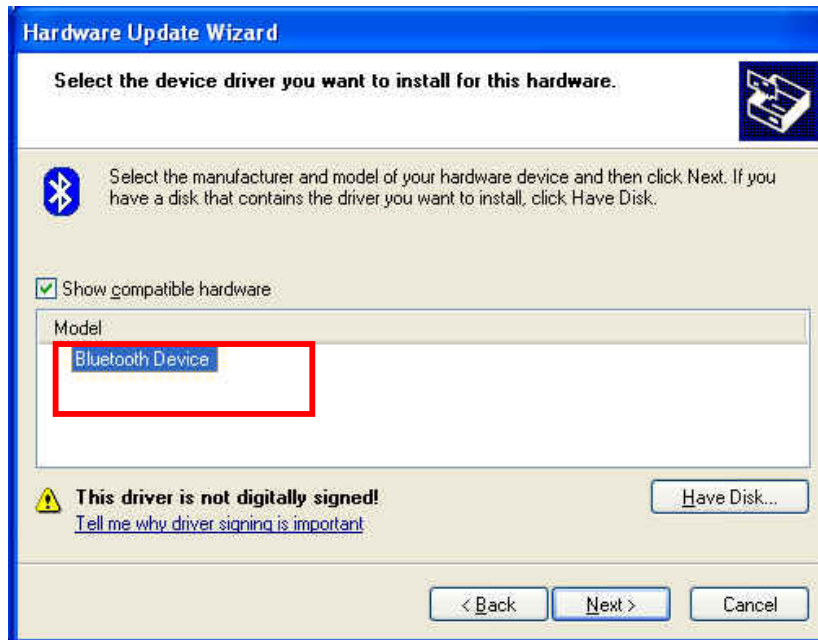




1.3 Select the item of "Don't search I will choose the driver to install", then click "Next"



1.4 Click the "Next" button.



1.5 Click "Finish" button



2. Switching from Microsoft Driver to WIDCOMM

2.1 Introduction

This document describes how to switch from the Microsoft driver to the WIDCOMM driver on Windows XP so that the BTW Bluetooth software can be used with your Bluetooth USB device. This problem may arise when installing the WIDCOMM Bluetooth software on Windows XP SP1/SP2. When the device is first inserted the system attempts to locate a signed driver that will work with the device. In this case the Microsoft driver is installed first if its Bluetooth driver supports the device being installed.

2.2 Installing the Widcomm Bluetooth driver

2.2.1 CHECK TO SEE IF THE MICROSOFT DRIVER IS INSTALLED

The Device Manager can be opened by right clicking on the "My Computer" icon and selecting the "Properties" menu option. When the Properties dialog appears select the "Hardware" tab and then click the "Device Manager" button.

When Microsoft stack is in control then the **Bluetooth Radios** category is present in the Device Manager as shown below, Figure 1. There will be 2/3 devices under that category, depending on the implementation, these are:

- Bluetooth Printing Support
- Microsoft Bluetooth Enumerator
- "Actual device". (Example: NanoSira Bluetooth Reference Radio)

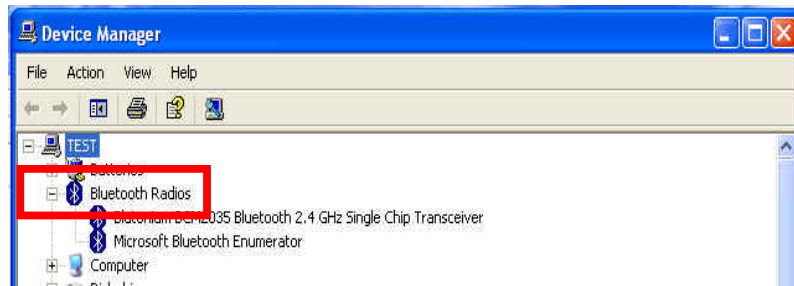


Figure1

2.2.2 INSTALLING THE WIDCOMM BLUETOOTH DRIVER

From figure 1, highlight the "Actual Device". Select "Action -> Properties" menu option. The following dialog will appear as shown below, Figure 2. Select Driver tab. Verify that the provider is Microsoft. Click the "Update Driver" button.

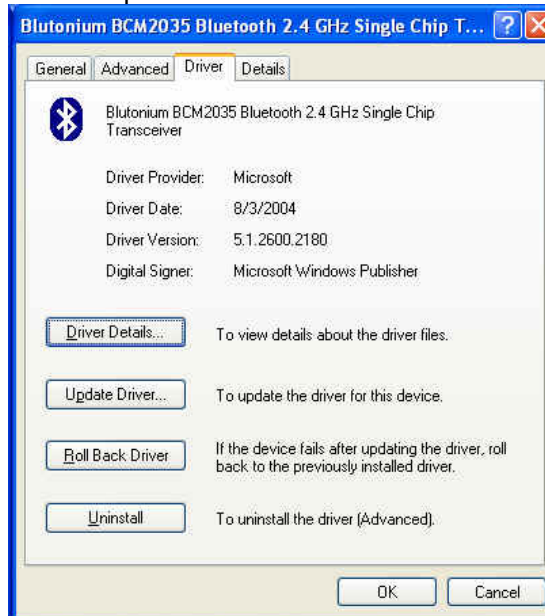


Figure2

2.2.3 USING THE HARDWARE UPDATE WIZARD TO INSTALL THE WIDCOMM DRIVER

When the Hardware Update Wizard appears, Figure 3, we are now ready to install the WIDCOMM Bluetooth driver.

Select "**Install from a list or specific location (Advanced)**" radio button and click on the "**Next**" button to continue.

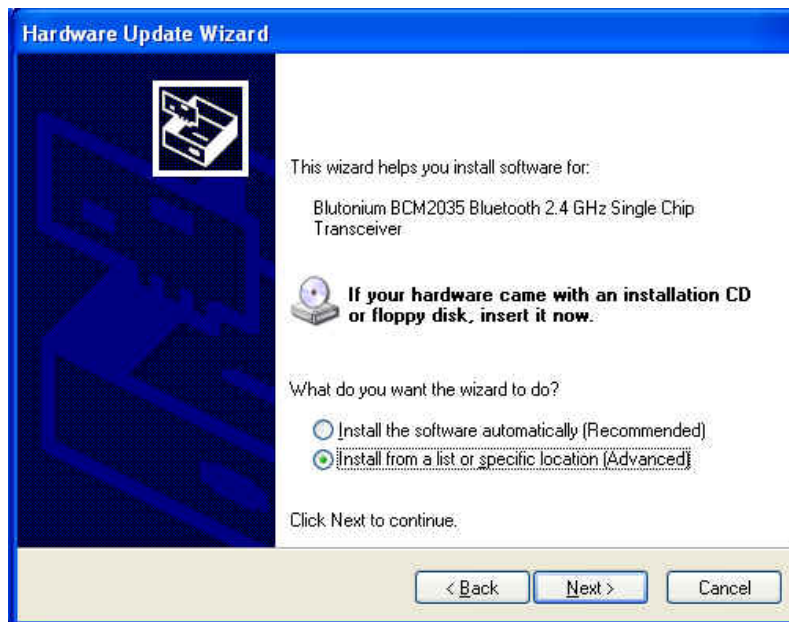


Figure3

The following screen will now appear, Figure 4. Select ***"Don't search. I will choose the driver to install"*** checkbox and click on the ***"Next"*** button to continue.

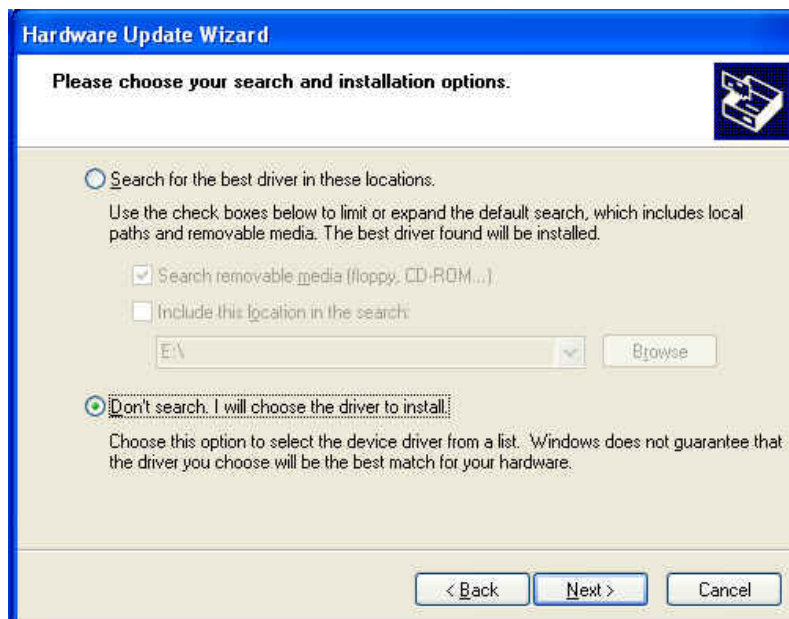


Figure4

The following screen will now appear, Figure 5. This page provides the selection between Microsoft and Widcomm provided drivers. Select the last device in the list and click on ***"Next"*** button to continue.

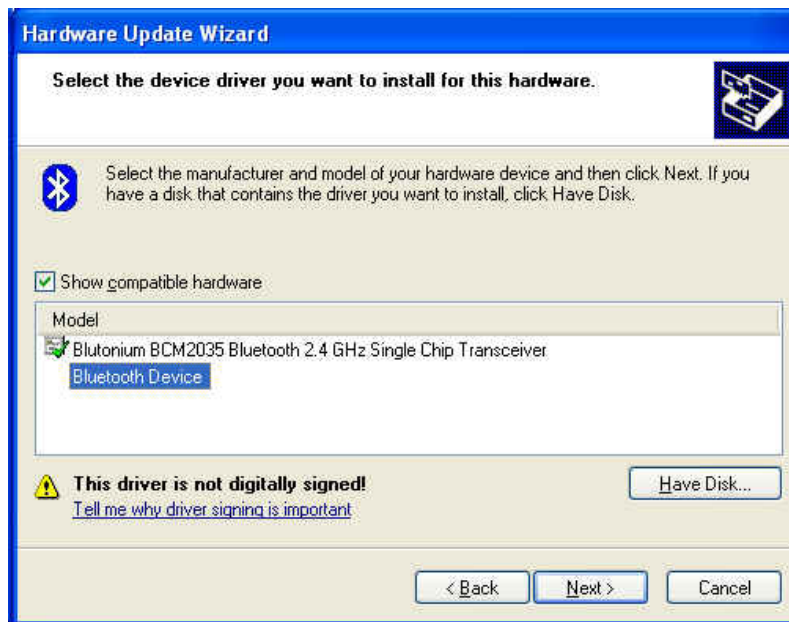


Figure5

The following screen will appear, Figure 6. Click the ***“Finish”*** button to complete the installation.



Figure6

2.2.4 VERIFY THE WIDCOMM DRIVER IS INSTALLED

Once the Hardware Update Wizard has completed successfully the following device properties screen should appear as shown in Figure 7, below. If the WIDCOMM Driver installation was successful the ***“Device Provider”*** will have changed to display WIDCOMM instead of Microsoft as originally shown in Figure 2.



Figure7

After clicking on the "Close" button in Figure 7 the Device Manager will appear. You will notice that the "**Bluetooth Radios**" section has been removed and has been replaced with the "**Bluetooth Devices**" section. This section only contains one entry for the WIDCOMM Bluetooth driver. If your Device Manager looks similar, Figure 8, then the installation has been successful. The Device manager can be closed and you can proceed to use the WIDCOMM Bluetooth software.

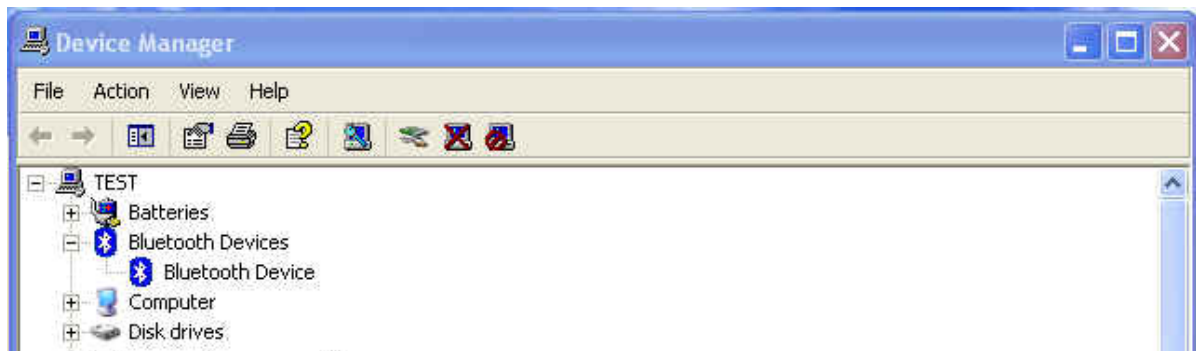


Figure8