

USER GUIDE

Rev.: 0.8
Date: 2004/11/24

. English	3
. Danish	16
. Dutch.....	21
. Finnish	26
. French	31
. German	36
. Italian.....	41
. Japanese.....	46
. Korean.....	51
. Norwegian	56
. Polish	61
. Portuguese	66
. Swedish.....	71
. Russian	77
. Spain	82
. Simplified Chinese	87
. Traditional Chinese	92

FCC Statement

The changes or modifications not expressly approved by the party responsible for compliance could void the user's authority to operate the equipment.

User Information

This device complies with part 15 of FCC Rules. Operation is subject to the following two conditions:

- (1) This device may not cause harmful interference, and
- (2) This device must accept any interference received, including interference that may cause undesired operation.

NOTE

This equipment has been tested and found to comply with the limits for a Class B digital device, pursuant to Part 15 of the FCC Rules. These limits are designed to provide reasonable protection against harmful interference in a residential installation. This equipment generates, uses and can radiate radio frequency energy and, if not installed and used in accordance with the instructions, may cause harmful interference to radio communications. However, there is no guarantee that interference will not occur in a particular installation. If this equipment does cause harmful interference to radio or television reception, which can be determined by turning the equipment off and on, the user is encouraged to try to correct the interference by one or more of the following measures:

- Reorient or relocate the receiving antenna.
- Increase the separation between the equipment and receiver.
- Connect the equipment into an outlet on a circuit different from that to which the receiver is connected.
- Consult the dealer or an experienced radio/TV technician for help.

To comply with FCC RF exposure requirements, this device and its antenna must be co-located or operating in the conjunction with any other antenna or transmitter.

FCC ID : QW3-BTBA02/QW3-BTBA02P1/QW3-BTBA02B/QW3-BTBA02B1

The Bluetooth word mark and logos are owned by the Bluetooth SIG, Inc.. Other trademarks and trade names are those of their respective owners.

. English

1. Bluetooth software installation and basic operations

USB Adapter Installation

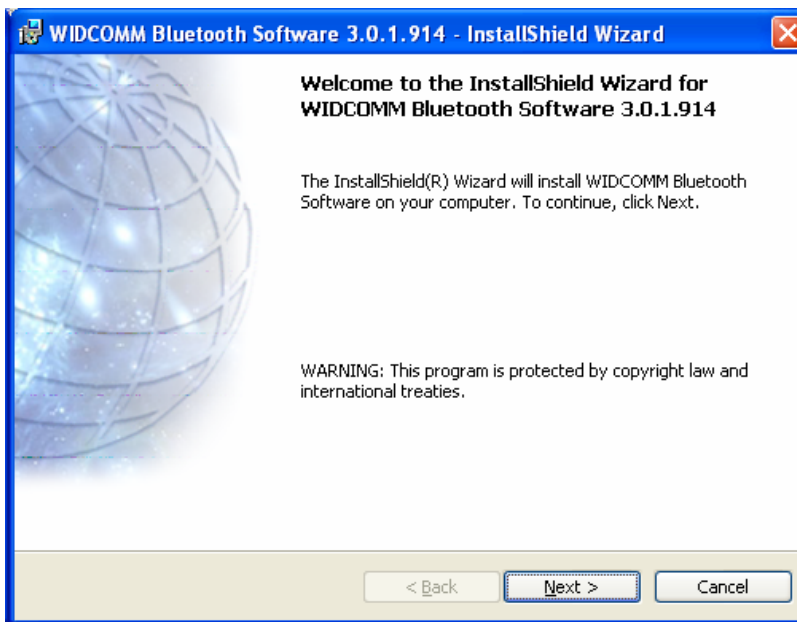
1. Windows Bluetooth Software Installation

NOTE: Please install the USB Bluetooth software before inserting the USB adapter!

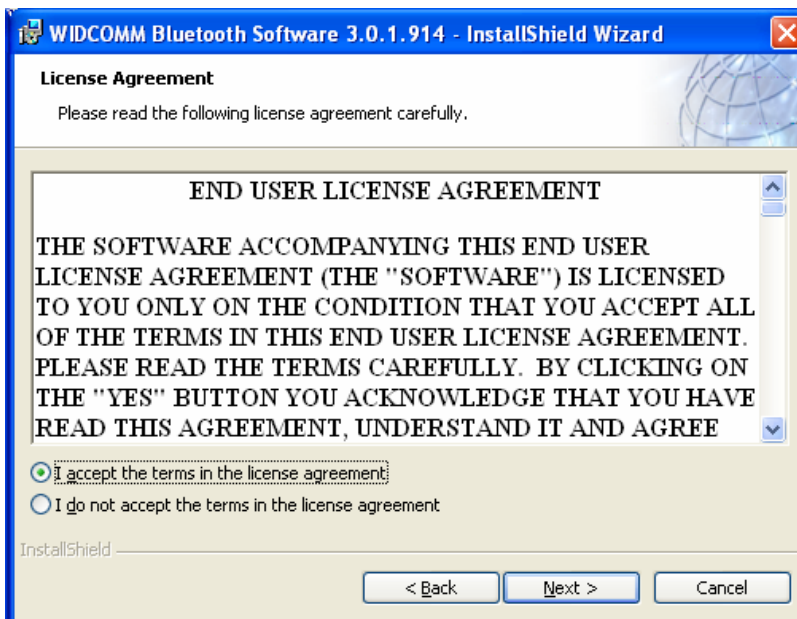
- Place the installation CD-ROM into the pc, the setup should start automatically. If the setup does not start please go to Windows Explorer, locate the CD-ROM and run '**autorun.exe**'.



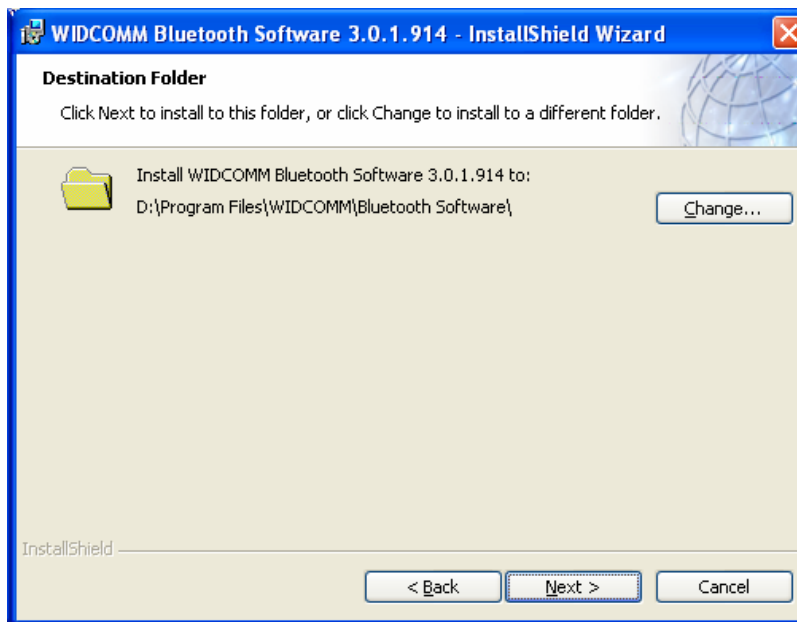
- Choose '**Install Drivers and Application Software**'.
- The InstallShield Wizard will start.



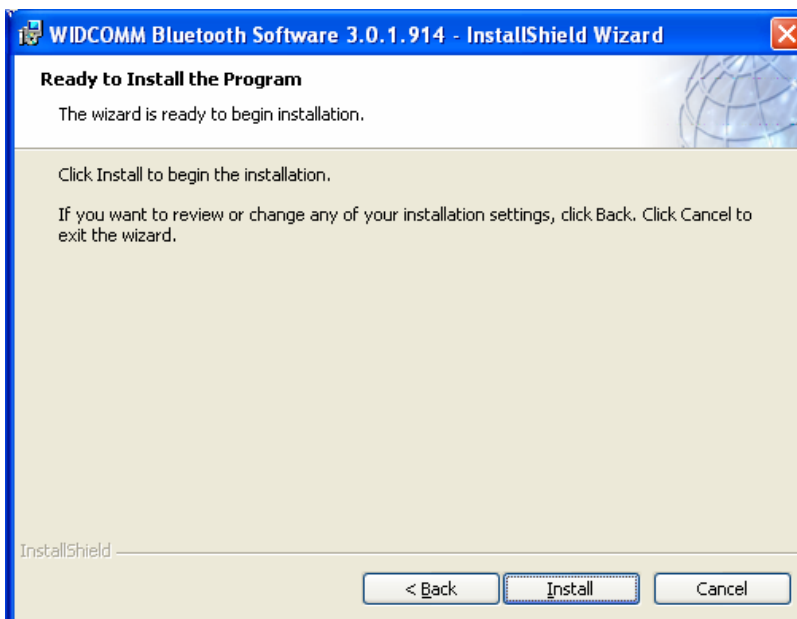
- On the Welcome screen click **Next** to continue.



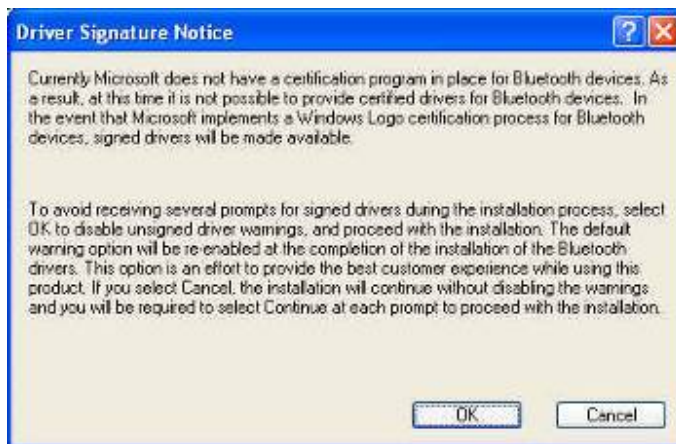
- Read the License Agreement and select '**I accept the terms in the license agreement**'. Click **Next**.



- Click **Next** to accept the default destination folder, click **Change** to browse to a new destination folder for the Bluetooth software.



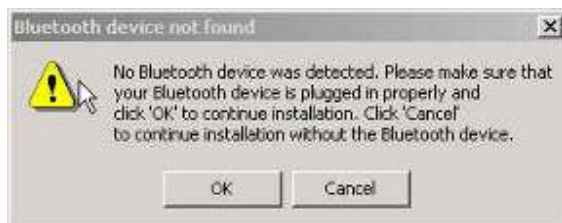
- Click **Install** to begin the installation of the bluetooth software.



- For Windows 2000/XP users, a "**Driver Signature Notice**" window appears, please click the "**OK**" button.



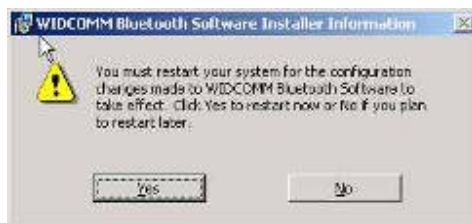
- For Windows 98 users, a window appears which asks you to insert the Windows 98 CD-Rom. Insert the original Windows 98 CD Rom and click "**OK**".



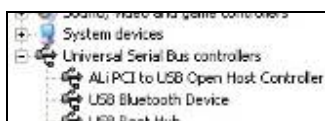
- The "**Bluetooth device not found**" window appears. Insert the USB Bluetooth adapter in the USB port. Click "**OK**".



- Click **Finish** to complete the bluetooth software installation.



- Click '**Yes**' to restart the computer and complete the installation.



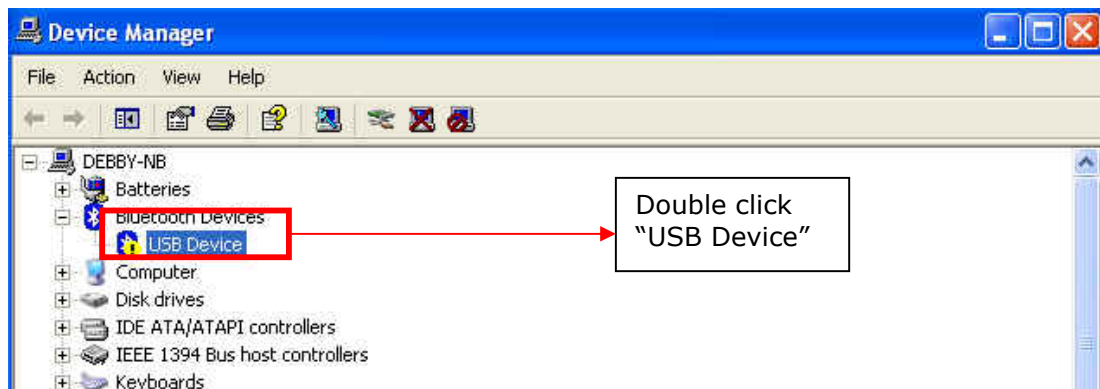
- Click start/(settings)/controlpanel/system/devicemanager. Check under 'Universal Serial Bus controllers' that a 'USB Bluetooth Device' is installed.
- If the information is not present please unplug the adapter, now plug in the adapter to initiate the driver.

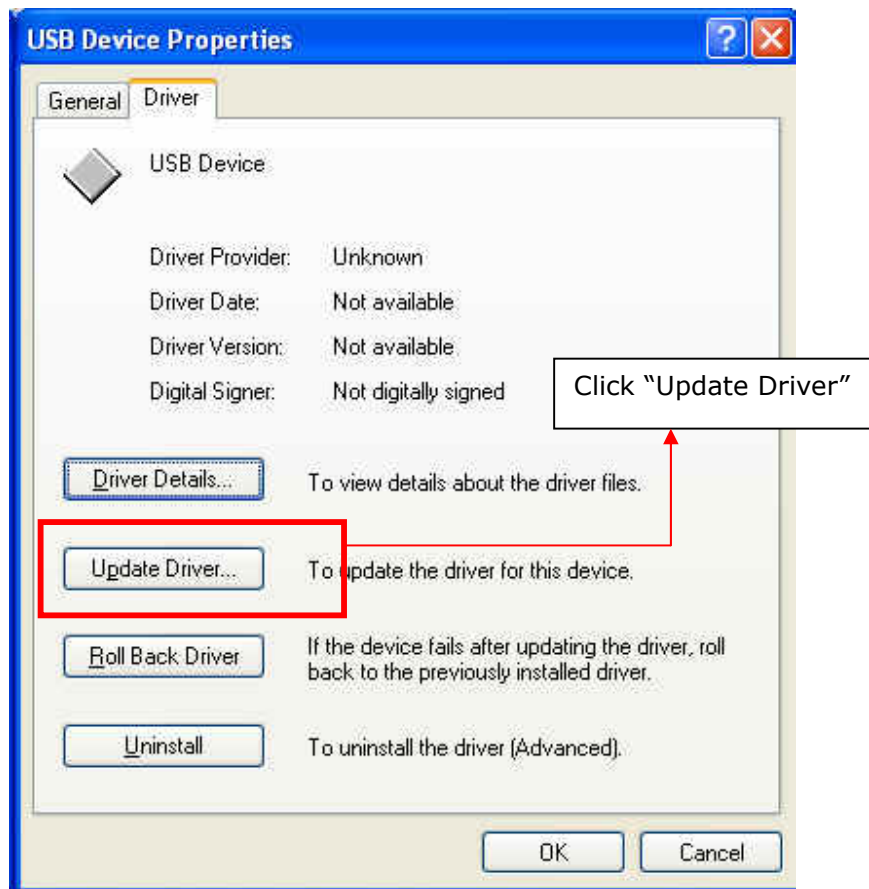
Troubleshooting

1.1 If the following screen appears, please follow the instruction below to update the driver for your Bluetooth device.

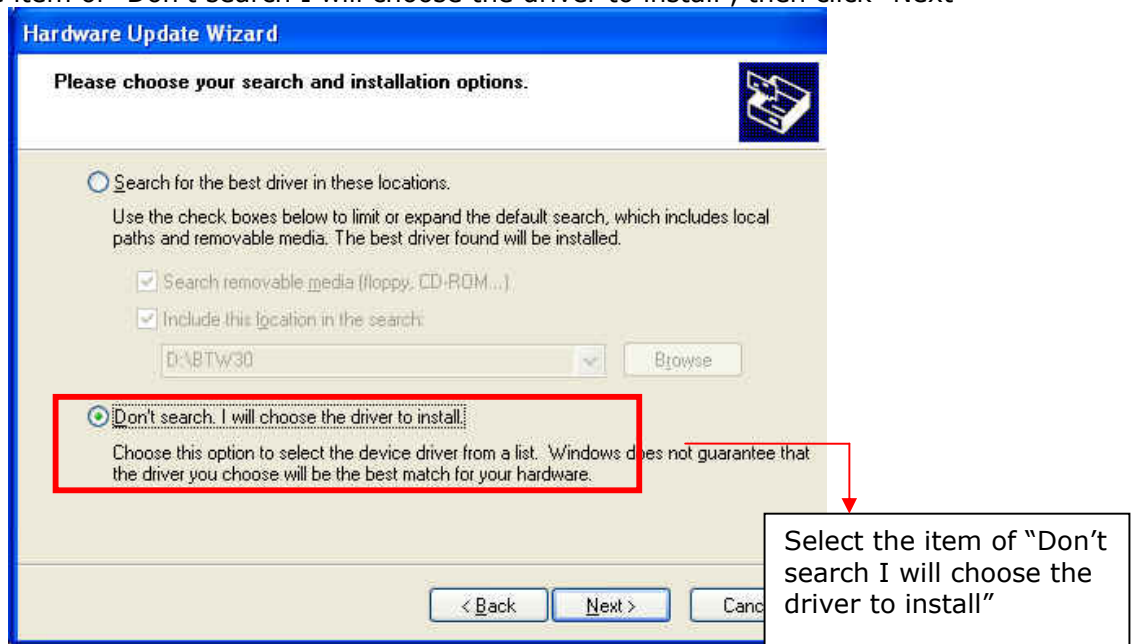


1.2 Go to "Control Panel" and find the unknown USB device, then double click "USB device" to update the driver.

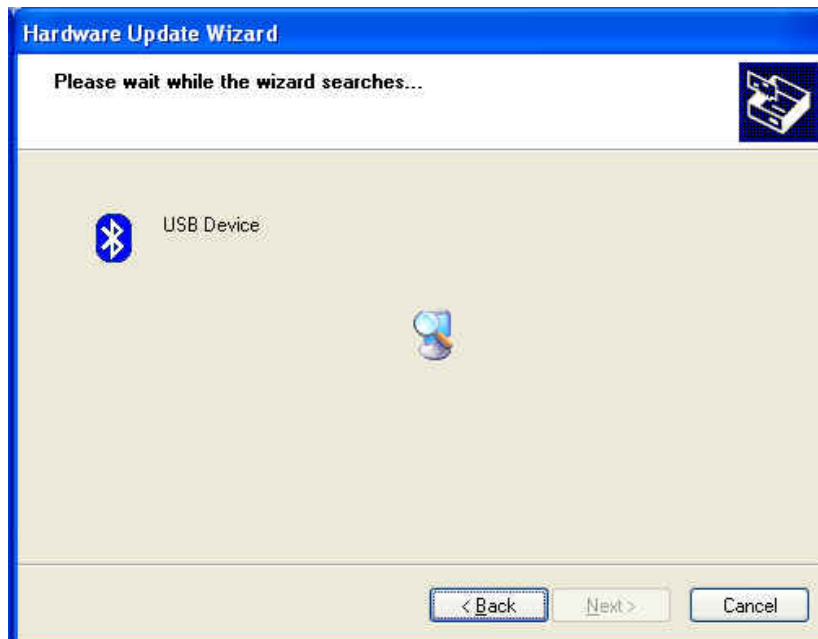
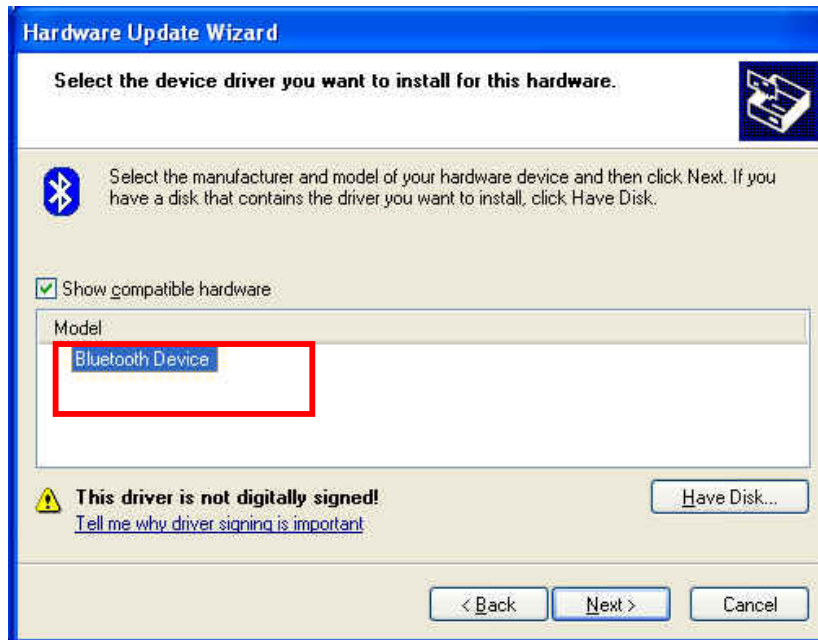




1.3 Select the item of "Don't search I will choose the driver to install", then click "Next"



1.4 Click the "Next" button.



1.5 Click "Finish" button



2. Switching from Microsoft Driver to WIDCOMM

2.1 Introduction

This document describes how to switch from the Microsoft driver to the WIDCOMM driver on Windows XP so that the BTW Bluetooth software can be used with your Bluetooth USB device. This problem may arise when installing the WIDCOMM Bluetooth software on Windows XP SP1/SP2. When the device is first inserted the system attempts to locate a signed driver that will work with the device. In this case the Microsoft driver is installed first if its Bluetooth driver supports the device being installed.

2.2 Installing the Widcomm Bluetooth driver

2.2.1 CHECK TO SEE IF THE MICROSOFT DRIVER IS INSTALLED

The Device Manager can be opened by right clicking on the "My Computer" icon and selecting the "Properties" menu option. When the Properties dialog appears select the "Hardware" tab and then click the "Device Manager" button.

When Microsoft stack is in control then the **Bluetooth Radios** category is present in the Device Manager as shown below, Figure 1. There will be 2/3 devices under that category, depending on the implementation, these are:

- Bluetooth Printing Support
- Microsoft Bluetooth Enumerator
- "Actual device". (Example: NanoSira Bluetooth Reference Radio)

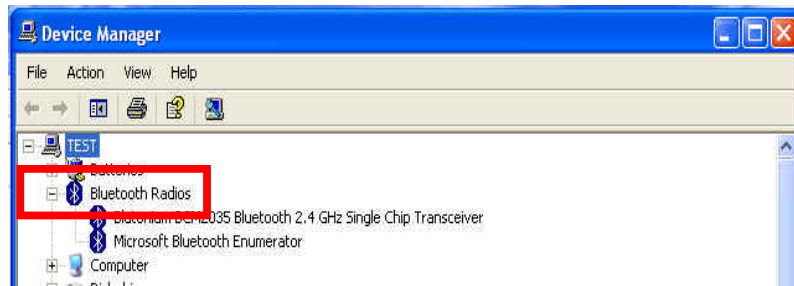


Figure1

2.2.2 INSTALLING THE WIDCOMM BLUETOOTH DRIVER

From figure 1, highlight the "Actual Device". Select "Action -> Properties" menu option. The following dialog will appear as shown below, Figure 2. Select Driver tab. Verify that the provider is Microsoft. Click the "Update Driver" button.

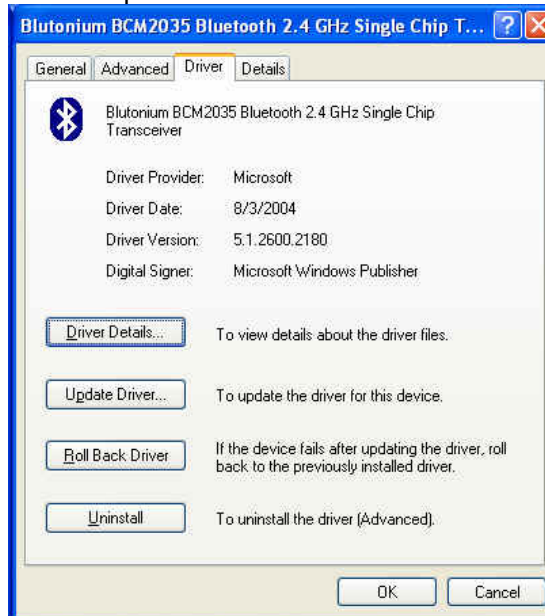


Figure2

2.2.3 USING THE HARDWARE UPDATE WIZARD TO INSTALL THE WIDCOMM DRIVER

When the Hardware Update Wizard appears, Figure 3, we are now ready to install the WIDCOMM Bluetooth driver.

Select "**Install from a list or specific location (Advanced)**" radio button and click on the "**Next**" button to continue.

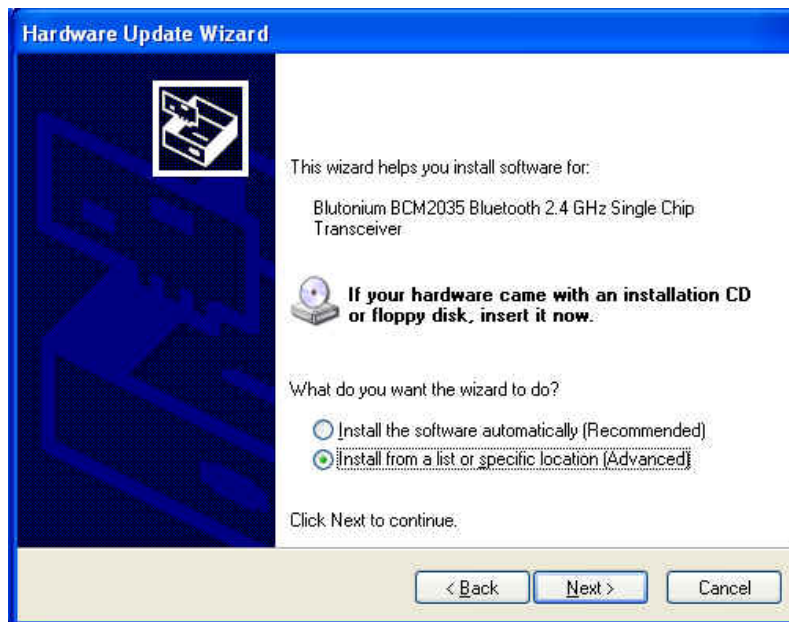


Figure3

The following screen will now appear, Figure 4. Select ***"Don't search. I will choose the driver to install"*** checkbox and click on the ***"Next"*** button to continue.

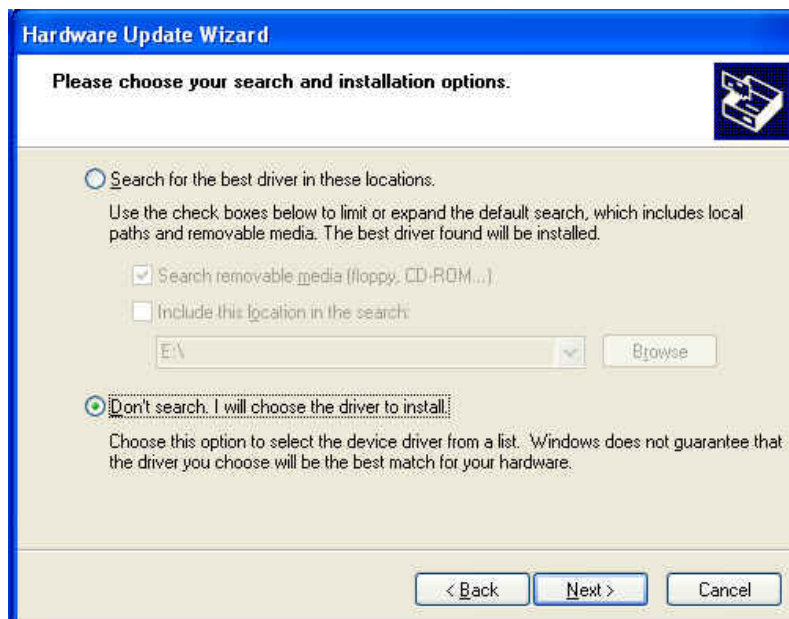


Figure4

The following screen will now appear, Figure 5. This page provides the selection between Microsoft and Widcomm provided drivers. Select the last device in the list and click on ***"Next"*** button to continue.

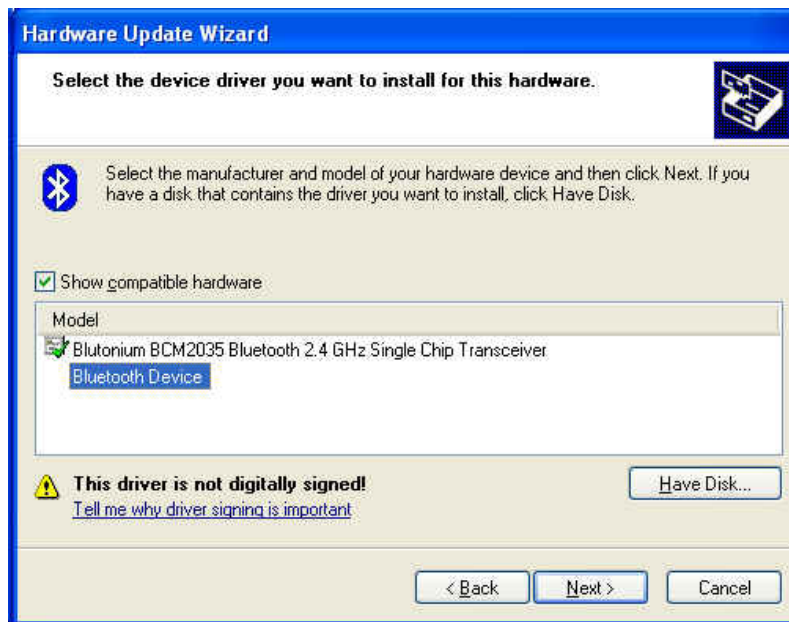


Figure5

The following screen will appear, Figure 6. Click the ***“Finish”*** button to complete the installation.



Figure6

2.2.4 VERIFY THE WIDCOMM DRIVER IS INSTALLED

Once the Hardware Update Wizard has completed successfully the following device properties screen should appear as shown in Figure 7, below. If the WIDCOMM Driver installation was successful the ***“Device Provider”*** will have changed to display WIDCOMM instead of Microsoft as originally shown in Figure 2.



Figure7

After clicking on the "Close" button in Figure 7 the Device Manager will appear. You will notice that the "**Bluetooth Radios**" section has been removed and has been replaced with the "**Bluetooth Devices**" section. This section only contains one entry for the WIDCOMM Bluetooth driver. If your Device Manager looks similar, Figure 8, then the installation has been successful. The Device manager can be closed and you can proceed to use the WIDCOMM Bluetooth software.

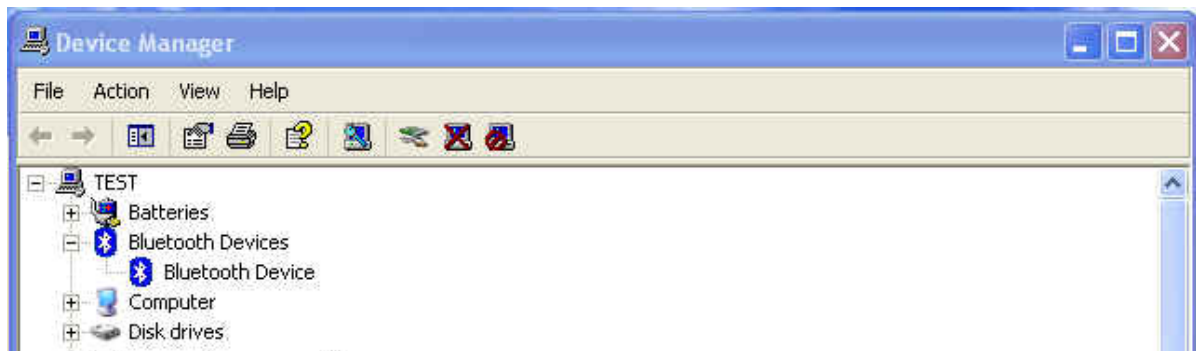


Figure8

. Danish

1. Bluetooth-softwareinstallation og basis betjening

USB-adapterinstallation

1. Windows Bluetooth-softwareinstallation

NB: Installér USB Bluetooth-software, før du indsætter USB-adapteren!

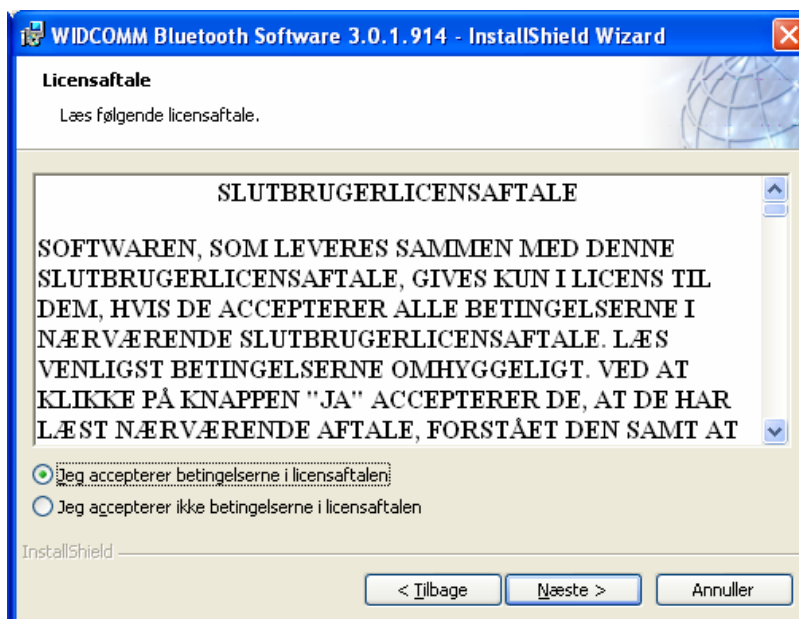
- Indsæt installations-CD-ROM'en i pc'en, og setup bør starte automatisk. Hvis setup ikke starter, så gå til Windows Explorer, find CD-ROM'en og kørs '**autorun.exe**'.



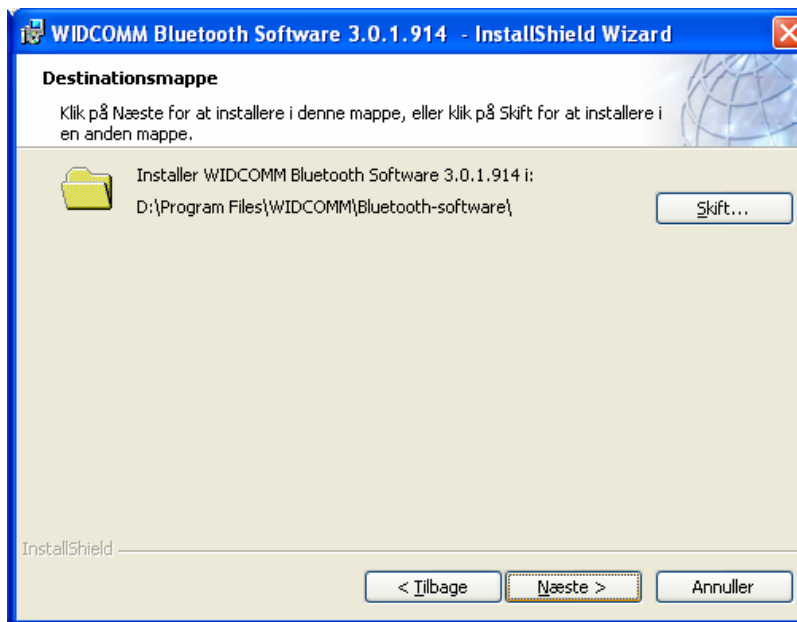
- Vælg '**Installér drivere og program-software**'.
- InstallShield-guiden starter.



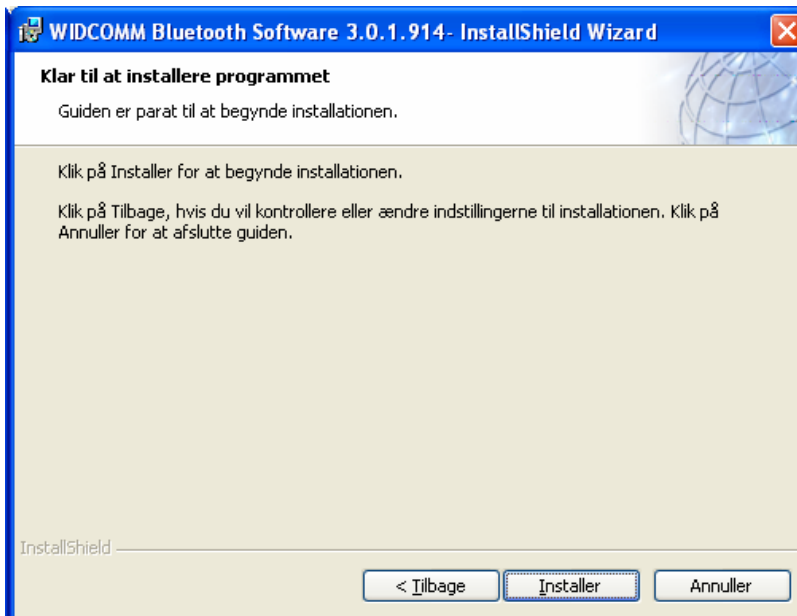
- På velkomstskræmen trykkes på **Næste** for at fortsætte.



- Læs Licens-aftalen og vælg '**Jeg accepterer vilkårene i licensaftalen**'. Tryk på **Næste**.



- Tryk på **Næste** for at acceptere standarddestinationsmappen, klik på **Ændr** for at bladre til en ny destinationsmappe til Bluetooth-softwaren.



- Klik på **Installér** for at starte installationen af Bluetooth-softwaren.



- For Windows 2000/XP-brugere vil et "**Driver-signatur-besked**"-vindue blive vist, tryk på "**OK**"-knappen.



- For Windows 98-brugere, vil et vindue blive vist, hvor du anmodes om at indsætte Windows 98 CD-Rom'en. Indsæt den originale Windows 98 CD-Rom og klik på "**OK**".



- Vinduet "**Bluetooth-enhed ikke fundet**" vises. Indsæt USB Bluetooth-adapteren i USB-porten. Klik på "**OK**".



- Klik på **Afslut** for at afslutte Bluetooth-softwareinstallationen.



- Tryk på **Ja** for at genstarte computeren og fuldføre installationen.



- Tryk på start/(indstillinger)/kontrolpanel/system/enhedshåndtering. Vælg under 'USB-controller' hvor en 'USB Bluetooth-enhed' er installeret.
- Hvis oplysningen ikke findes, så tag adapteren ud af stikket, og sæt den i igen for at aktivere driveren.

. Dutch

1. Installatie en bediening van Bluetooth-software

Installatie van usb-adapter

1. Installatie van Windows Bluetooth-software

OPMERKING: Installeer de usb Bluetooth-software voordat u de usb-adapter aansluit!

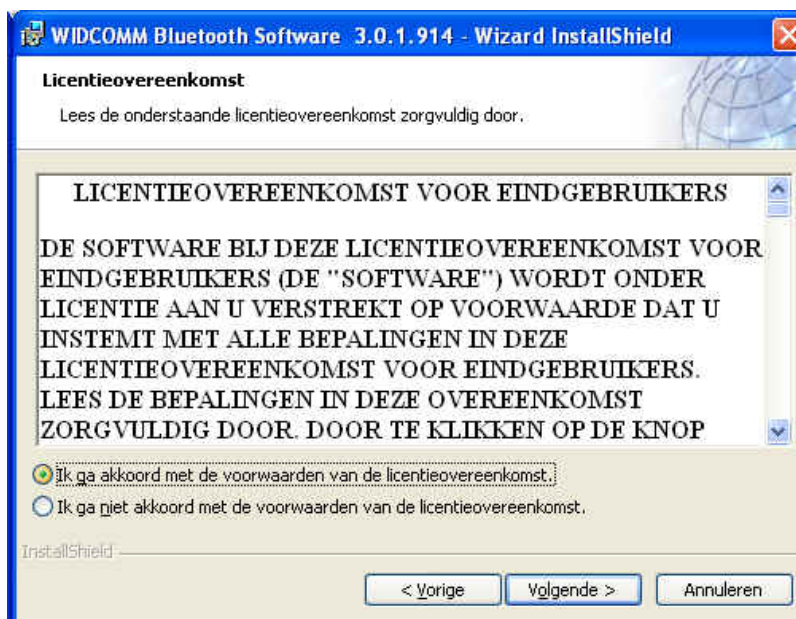
- Leg de installatie-cd in de computer. De installatie start automatisch. Start de installatie niet, ga dan naar de Windows Verkenner, blader naar de cd en start 'autorun.exe'.



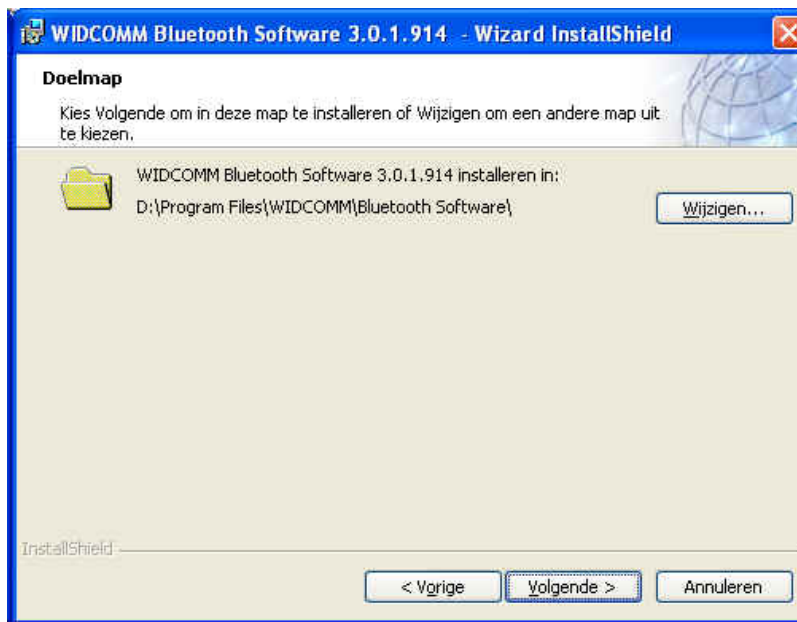
- Kies '**Stuurprogramma's en toepassing installeren**'.
- De InstallShield Wizard start.



- Klik op het scherm Welkom op **Volgende** om verder te gaan.



- Lees de Licentieovereenkomst en selecteer '**Ik accepteer de voorwaarden in de Licentieovereenkomst**'. Klik op **Volgende**.



- Klik op **Volgende** om de standaardmap te accepteren of op **Wijzigen** om een andere map te kiezen voor het installeren van de Bluetooth-software.



- Klik op **Installeren** om de Bluetooth-software te installeren.



- Gebruikers van Windows 2000/XP zien nu een "**Waarschuwing van handtekening van stuurprogramma**". Klik op de knop "**OK**".



- Gebruikers van Windows 98 zien een venster waarin om de cd van Windows 98 wordt gevraagd. Leg de oorspronkelijke cd van Windows 98 in de computer en klik op "**OK**".



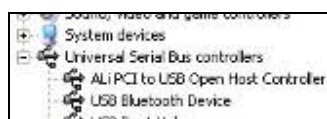
- Het venster "**Bluetooth-apparaat niet gevonden**" verschijnt. Steek de usb-Bluetooth-adapter in de usb-aansluiting. Klik op "**OK**".



- Klik op **Voltoeien** om de installatie van Bluetooth te voltooien.



- Klik op **'Ja'** om de computer te herstarten en de installatie te voltooien.



- Klik op Start/(Instellingen)/Configuratiescherm/Systeem/Apparaatbeheer. Controleer onder 'Universele Seriële Buscontrollers' of er een 'USB Bluetooth Apparaat' geïnstalleerd is.
- Ontbreken de gegevens, verwijder dan de adapter en sluit hem opnieuw aan om het stuurprogramma te initiëren.

. Finnish

1. Bluetooth-ohjelmiston asennus ja perustoiminnot

USB-adapterin asennus

1. Windows Bluetooth -ohjelmiston asennus

HUOMAA: Asenna USB Bluetooth -ohjelmisto ennen USB-adapterin liittämistä!

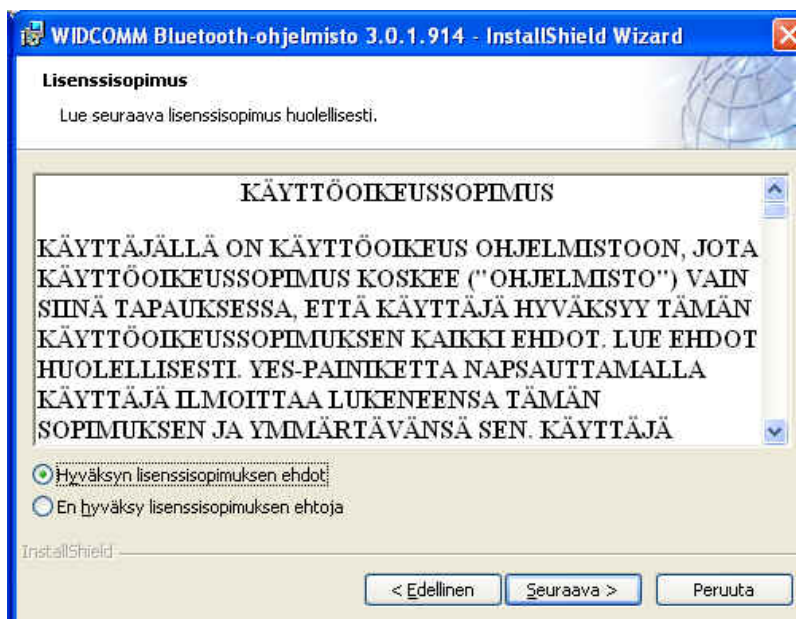
- Kun asetat CD-ROM-asennuslevyn tietokoneeseen, käynnistyy asennus automaattisesti. Jos asennus ei käynnisty automaattisesti, valitse Windows Explorerilla CD-ROM ja käynnistä ohjelma **'autorun.exe'**.



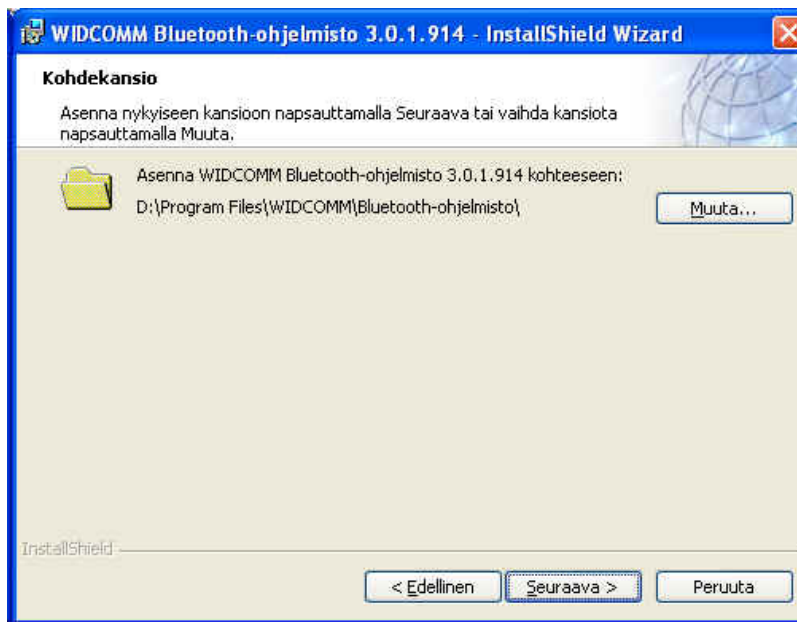
- Valitse **'Asenna ohjaimia ja ohjelmia'**.
- Asennusohjelma käynnistyy.



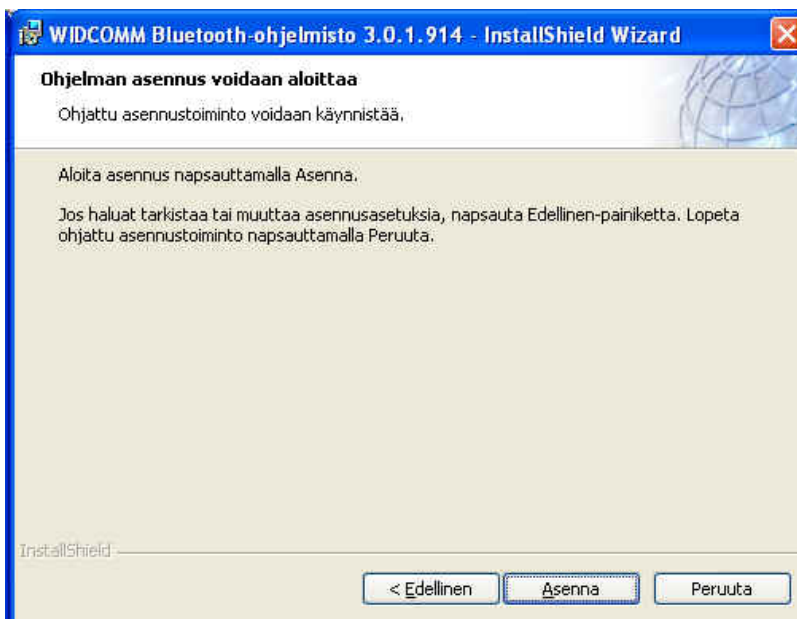
- Jatka valitsemalla **Seuraava** -vaihtoehto Tervetuloa-ikkunassa.



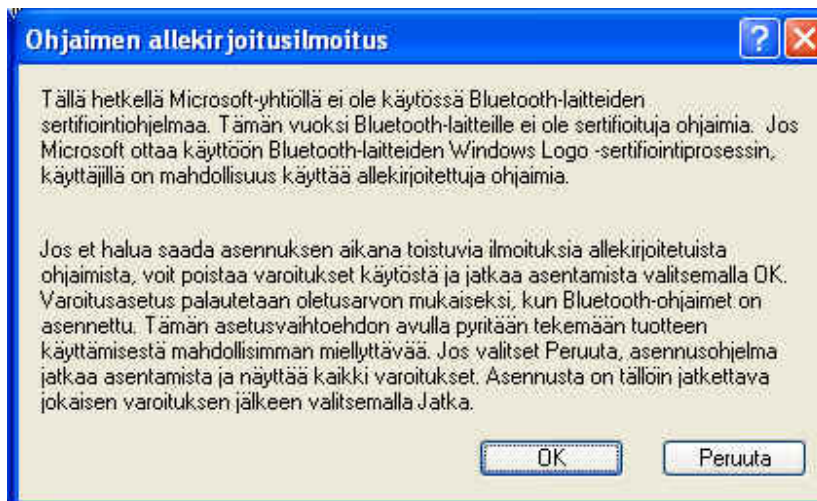
- Lue lisenssiehdot ja hyväksy ne valitsemalla '**Hyväksyn lisenssisopimuksen ehdot**'. Valitse sen jälkeen **Seuraava**.



- Hyväksy oletuksena oleva tallennuskansio valitsemalla **Seuraava** tai napsauta vaihtoehtoa **Vaihda** valitaksesi jonkun toisen kansion Bluetooth-ohjelmistolle.



- Aloita Bluetooth-ohjelmiston asennus valitsemalla **Asenna**.



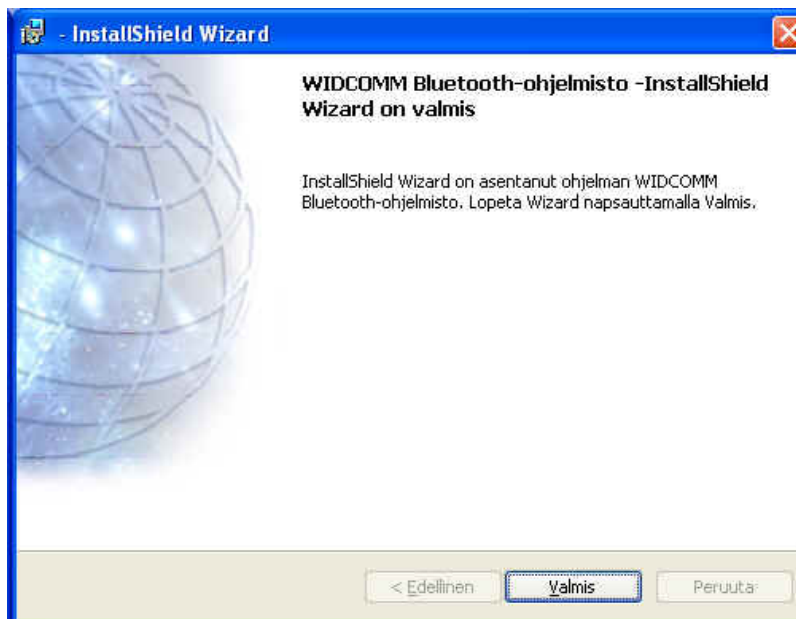
- Windows 2000/XP käyttäjillä avautuu "**Ohjaimen allekirjoitus**" -ikkuna, hyväksy valitsemalla "**OK**" button.



- Windows 98 -käyttäjillä asennusohjelma pyytää laittamaan koneeseen Windows 98 CD-levyn. Aseta tietokoneeseen alkuperäinen Windows 98 CD-levy ja valitse "**OK**".



- "**Bluetooth -laitetta ei löydy**" -ikkuna avautuu. Aseta USB Bluetooth -adapteri USB-porttiin. Valitse "**OK**".



- Päätä Bluetooth-asennus valitsemalla **Lopeta**.



- Valitse '**Kyllä**' käynnistääksesi tietokoneen uudelleen ja viimeistelläksesi asennuksen.



- Valitse käynnistä/(asetukset)/ohjauspaneeli/järjestelmä/laitehallinta. Tarkista 'Universal Serial Bus' -vaihtoehdon alta, että USB Bluetooth -laite on asennettuna.
- Jos sitä ei näy, irrota adapteri ja kytke se uudelleen, jotta tietokone tunnistaa ohjaimen.

. French

1. Installation du logiciel Bluetooth et opérations de base

Installation de l'Adaptateur USB

1. Installation du Logiciel Windows Bluetooth

REMARQUE: Veuillez installer le logiciel Bluetooth USB avant de connecter l'adaptateur USB!

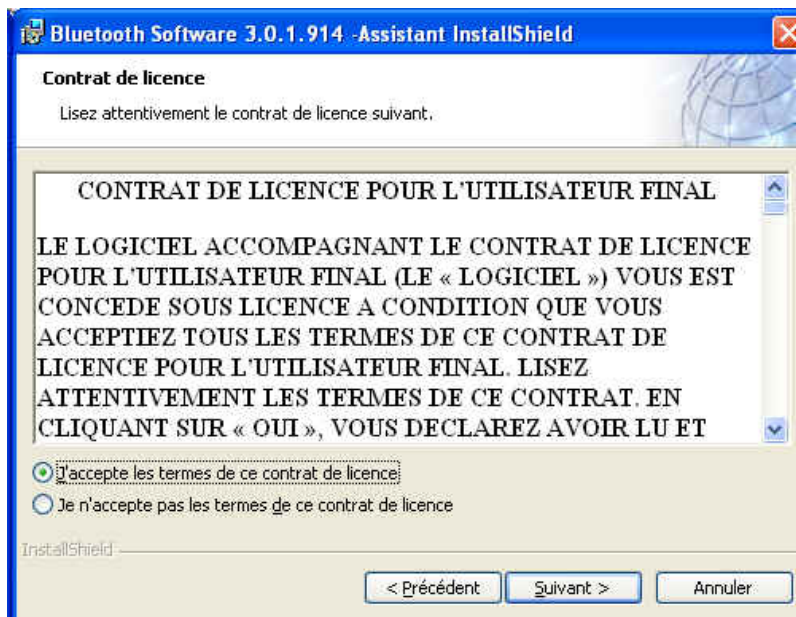
- Placez le CD-ROM d'installation dans le PC, l'installation devrait démarrer automatiquement. Si l'installation ne démarre pas, avec l'Explorateur de Windows parcourez le CD-ROM et lancez "**autorun.exe**".



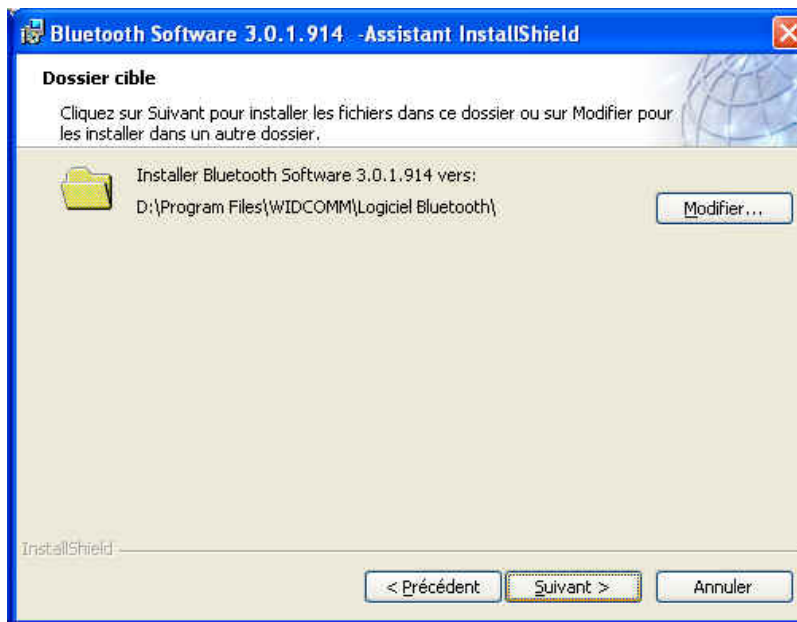
- Choisissez "**Install Drivers and Application Software**".
- L'Assistant d'Installation va démarrer.



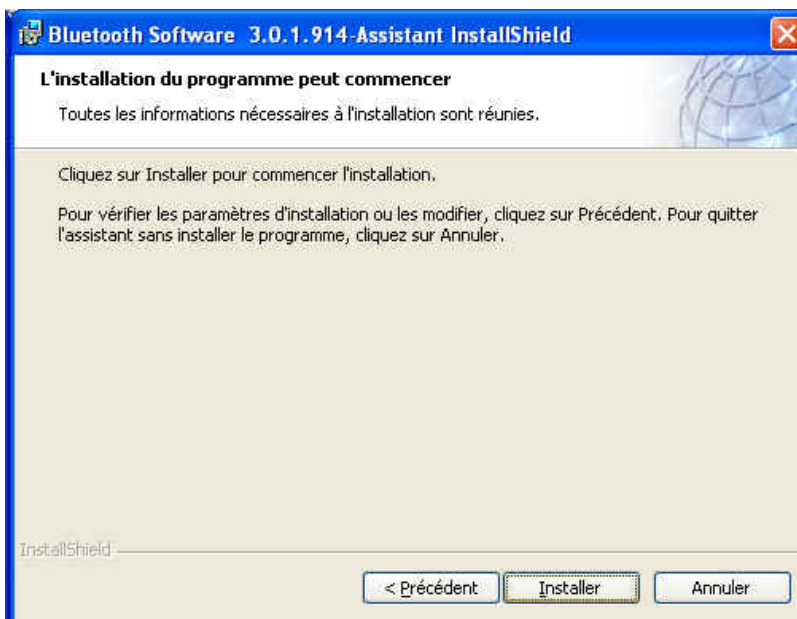
- Sur l'écran, cliquez sur "**Suivant**" pour continuer.



- Lisez le Contrat de Licence et sélectionnez "**J'accepte les termes de ce contrat de licence**". Cliquez sur "**Suivant**".



- Cliquez sur "**Suivant**" pour accepter le dossier de destination par défaut, ou cliquez sur "**Modifier...**" pour aller à un nouveau dossier de destination pour le logiciel Bluetooth.



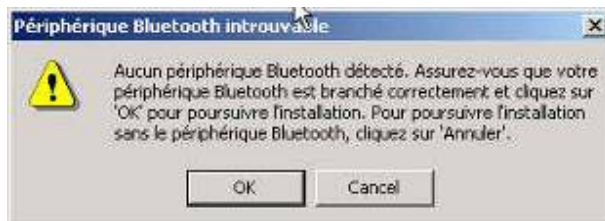
- Cliquez sur "**Installer**" pour lancer l'installation du logiciel Bluetooth.



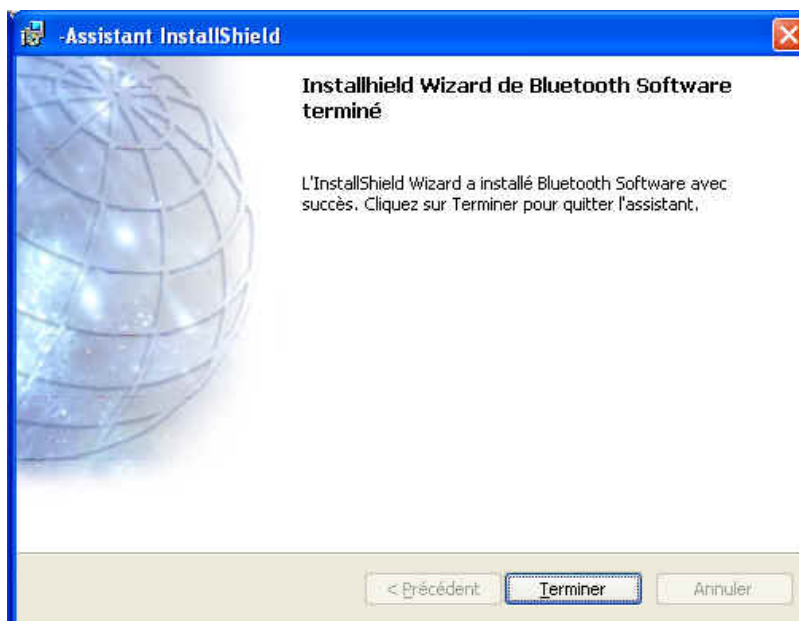
- Pour les utilisateurs de Windows 2000/XP, la fenêtre "**Notice de signature du pilote**" apparaît, cliquez sur le bouton "**OK**".



- Pour les utilisateurs de Windows 98, une fenêtre apparaît vous invitant à insérer le CD-ROM de Windows 98. Insérez le CD-ROM original de Windows 98 et cliquez sur "**OK**".



- La fenêtre "**Périphérique Bluetooth introuvable**" apparaît. Connectez l'adaptateur Bluetooth USB au port USB. Cliquez sur "**OK**".



- Cliquez sur "**Terminer**" pour terminer l'installation du logiciel bluetooth.



- Cliquez sur "**Oui**" pour redémarrer l'ordinateur et terminer l'installation.



- Cliquez sur démarrer/(paramètres)/panneau de configuration/système/gestionnaire de périphériques. Vérifiez dans 'Contrôleur de Bus USB' qu'un 'Périphérique Bluetooth USB' est installé.
- Si l'information n'est pas présente, débranchez l'adaptateur. Puis, rebranchez l'adaptateur pour initialiser le pilote.

. German

1. Installation der Bluetooth-Software und erste Schritte

Installation der USB-Adapter

1. Installation der Bluetooth-Software bei Windows

HINWEIS: Installieren Sie die USB-Bluetooth-Software, bevor Sie den USB-Adapter anschließen!

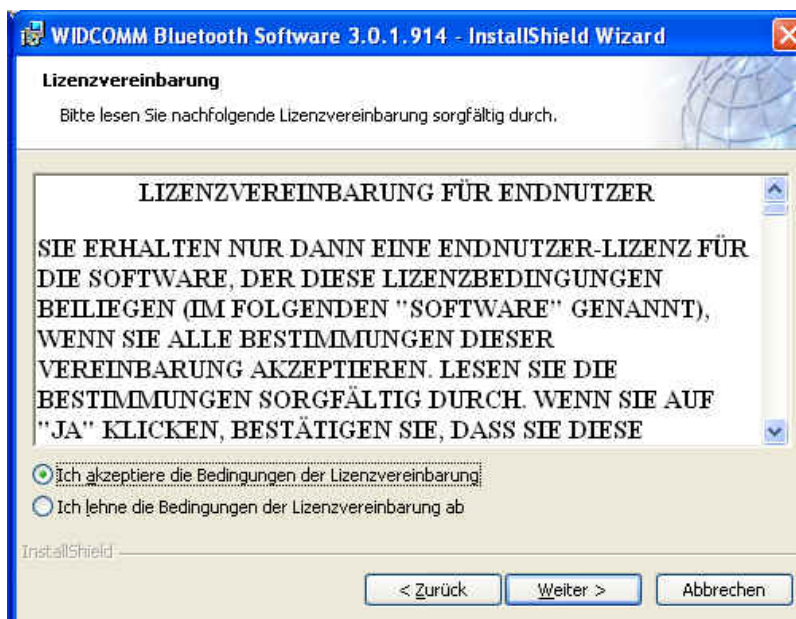
- Legen Sie die Installations-CD in das CD-ROM-Laufwerk ein. Das Setup-Programm wird dann automatisch gestartet. Sollte das Programm nicht gestartet werden, wechseln Sie im Windows Explorer in das Verzeichnis der CD-ROM und starten die Datei "**autorun.exe**" manuell.



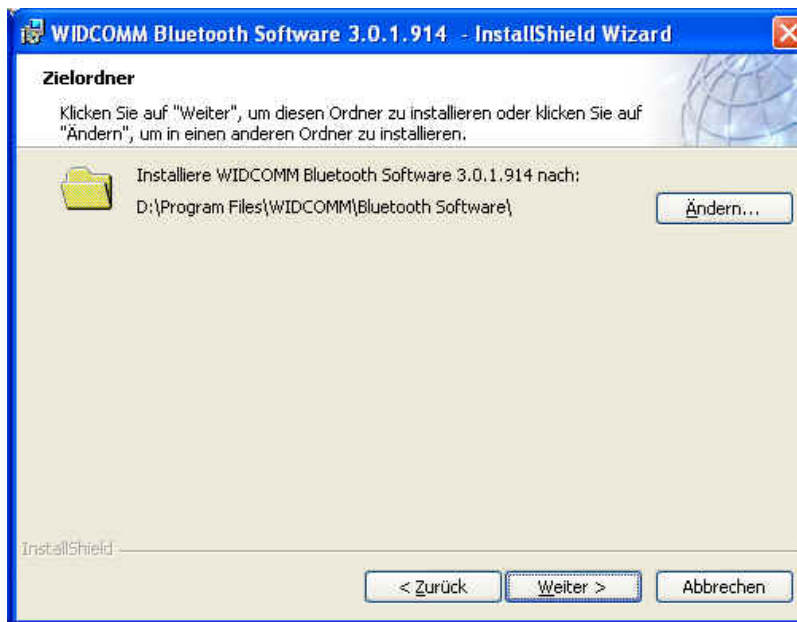
- Wählen Sie "**Install Drivers and Application Software**".
- Der InstallShield-Assistent wird gestartet.



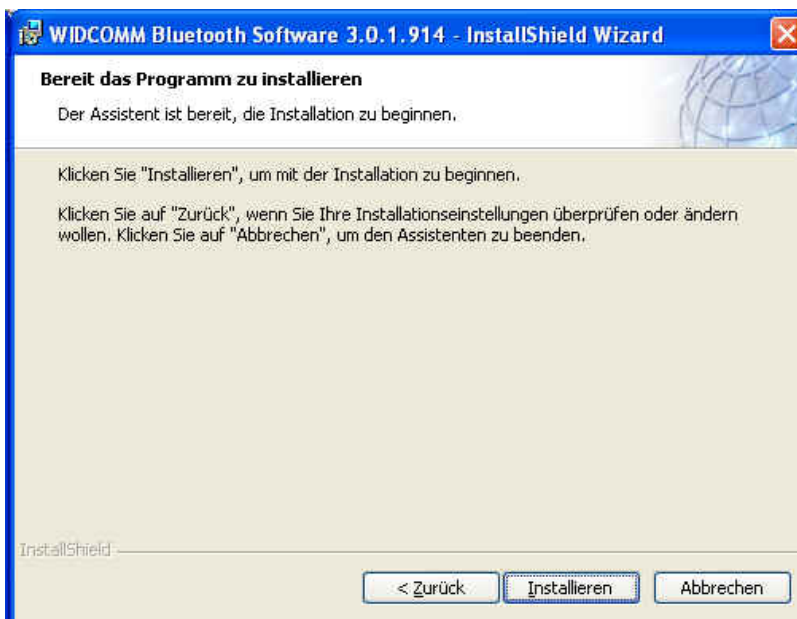
- Klicken Sie zum Fortfahren auf **"Weiter"**.



- Lesen Sie sich die Lizenzvereinbarung durch und wählen **"Ich akzeptiere die Bedingungen der Lizenzvereinbarung"**. Klicken Sie auf **"Weiter"**.



- Klicken Sie auf **"Weiter"**, um den angegebenen Zielordner zu übernehmen. Wenn Sie **"Ändern..."** wählen, können Sie einen neuen Zielordner für die Bluetooth-Software festlegen.



- Klicken Sie auf **"Installieren"**, um die Installation der Bluetooth-Software zu starten.



- Wenn Sie mit Windows 2000/XP arbeiten, erscheint eine Meldung **"Hinweis für Treiber-Signatur"**. Klicken Sie auf **"OK"**.



- Wenn Sie mit Windows 98 arbeiten, werden Sie aufgefordert, die Windows-98-CD einzulegen. Legen Sie die Original-CD mit dem Betriebssystem Windows 98 ein und klicken auf **"OK"**.



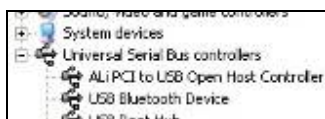
- Das Fenster **"Bluetooth-Gerät Wurde nicht gefunden"** erscheint. Schließen Sie den USB-Bluetooth-Adapter an den USB-Anschluss an und klicken auf **"OK"**.



- Klicken Sie auf "**Fertigstellen**", um die Installation der Bluetooth-Software fertig zu stellen.



- Klicken Sie auf "**Ja**", um den Computer neu zu starten und die Installation abzuschließen.



- Klicken Sie auf Start/(Einstellungen)/Systemsteuerung/System/Geräte-Manager. Überprüfen Sie bei 'USB-Controller', ob ein 'USB-Bluetooth-Gerät' installiert ist.
- Ist das nicht der Fall, trennen Sie den Adapter wieder ab. Schließen Sie ihn nun wieder an, um den Treiber zu initiieren.

. Italian

1. Installazione del software Bluetooth e operazioni preliminari

Installazione adattatore

1. Installazione del software Bluetooth

NOTA Installare il software USB Bluetooth prima di inserire l'adattatore USB!

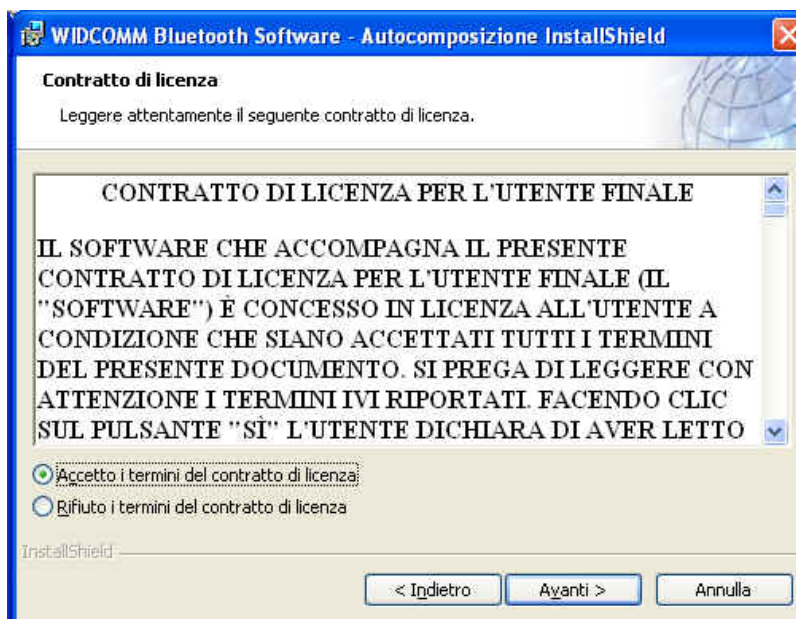
- Inserire il CD-ROM di installazione nel PC, la procedura di setup dovrebbe venire avviata automaticamente. Se la procedura di setup non si avvia automaticamente aprire Windows Explorer individuare il CD-ROM e eseguire "**autorun.exe**".



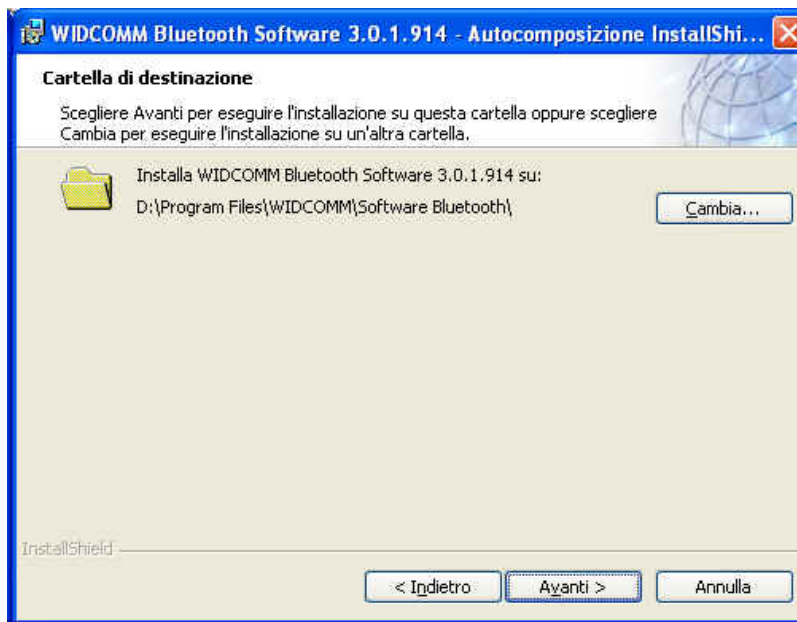
- Selezionare "**Install Drivers and Application Software**".
- Verrà visualizzata la finestra dell'installazione guidata.



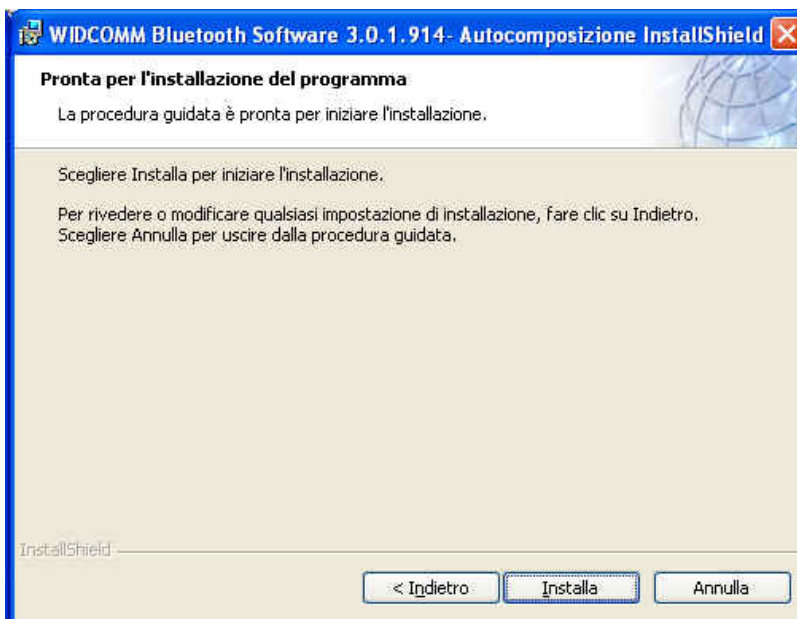
- Fare clic su **"Avanti"** per proseguire.



- Leggere l'accordo di licenza e selezionare **"Accetto i termini del contratto di licenza"**. Fare clic su **"Avanti"**



- Fare clic su **"Avanti"** per accettare la cartella di destinazione predefinita, oppure fare clic su **"Cambia..."** per sfogliare il drive per una nuova destinazione in cui memorizzare il software Bluetooth.



- Fare clic su **"Installa"** per avviare l'installazione del software Bluetooth.



- Nei sistemi operativi Windows 2000/XP viene visualizzata un **"Avviso sulla firma del driver"**, fare clic sul pulsante **"OK"**.



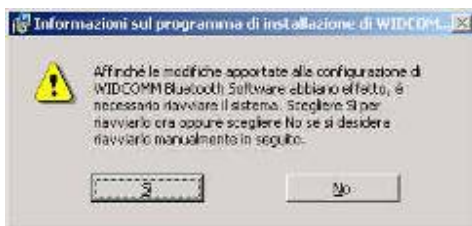
- Se il sistema operativo è Windows 98 viene chiesto l'inserimento del CD Windows 98. Inserire il CD Windows 98 originale e fare clic su **"OK"**.



- Viene visualizzata la finestra **"Periferica Bluetooth non trovata"**. Inserire l'adattatore USB Bluetooth nella porta USB Fare clic su **"OK"**.



- Fare clic su **"Fine"** per completare l'installazione del software Bluetooth.



- Fare clic su **"Sì"** per riavviare il computer e completare l'installazione.



- Fare clic su Start(impostazioni)pannello di controllo/sistema/gestione periferiche Verificare che il "Dispositivo USB Bluetooth" sia riportato nella scheda "Controller USB(Universal Serial BUS)"
- Se l'informazione non è presente staccare l'adattatore. Ora inserire l'adattatore per avviare il driver.

. Japanese

1. ブルートゥース ソフトウェアのインストールと基本操作

CN-500/CN-502 USB アダプタのインストール

1. Windows ブルートゥース ソフトウェア インストール

注意: USB アダプタを挿入する前に USB ブルートゥースソフトウェアをインストールしてください。

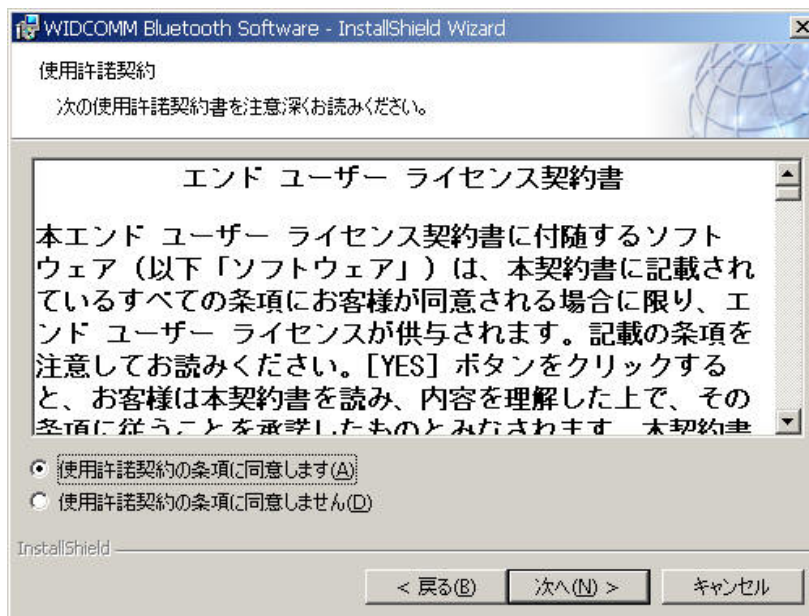
- インストール CD-ROM をお使いのパソコンに入れると、セットアップが自動的に開始します。セットアップが開始しない場合は、Windows エクスプローラで CD-ROM を開き、“autorun.exe”を実行します。



- “Install Drivers and Application Software”を選択します。
- InstallShield ウィザードが開始します。



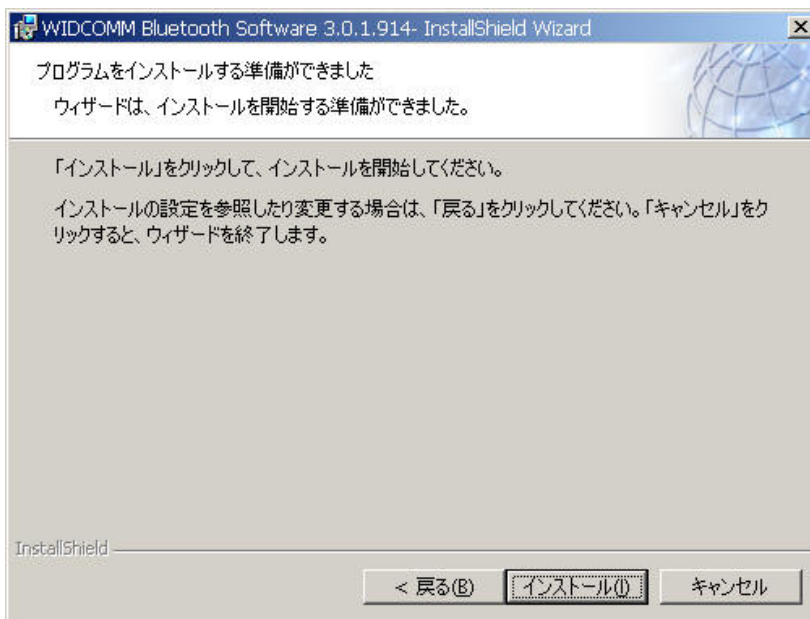
- スクリーン上の“次へ”をクリックし、続けます。



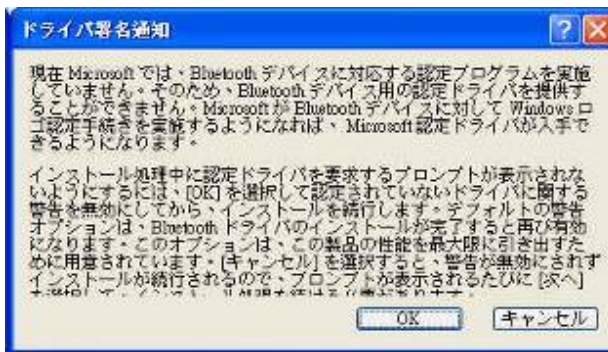
- ライセンス同意書を読み、“使用許諾契約の条項に同意します”を選択し、“次へ”をクリックします。



- デフォルトのインストール先フォルダでよい場合は**“次へ”**をクリックし、変更する場合は**“変更”**をクリックし、ブルートウスのソフトウェアの新しいインストール先フォルダをブラウズして選択します。



- **“インストール”**をクリックし、ブルートウスソフトウェアのインストールを開始します。



- Windows 2000/XP のユーザーは、“ドライバ署名通知” のウィンドウが表示されます。“OK”ボタンをクリックします。



- Windows 98 のユーザーは、Windows 98 の CD-Rom の挿入を求めるウィンドウが表示されます。Windows 98 のオリジナル CD-Rom を入れ、“OK”をクリックします。



- “Bluetooth デバイスが見つかりません”のウィンドウが表示されます。USB ブルートゥースアダプタを USB ポートに挿入し、“OK”をクリックします。



- “完了” をクリックし、ブートウースソフトウェアのインストールを終了します。



- “はい” をクリックし、コンピュータを再起動するとインストール完了です。



- スタート/(設定)/コントロールパネル/システム/デバイスマネージャ、をクリックします。'ユニバーサルシリアルバスコントローラ'下に'USB ブルートゥースデバイス'がインストールされていることを確認します。
- 情報が表示されない場合、アダプタを取り外し、再度アダプタを挿入してドライバを起動してください。

. Korean

1. Bluetooth 소프트웨어 설치 및 기본 조작

USB 어댑터 설치

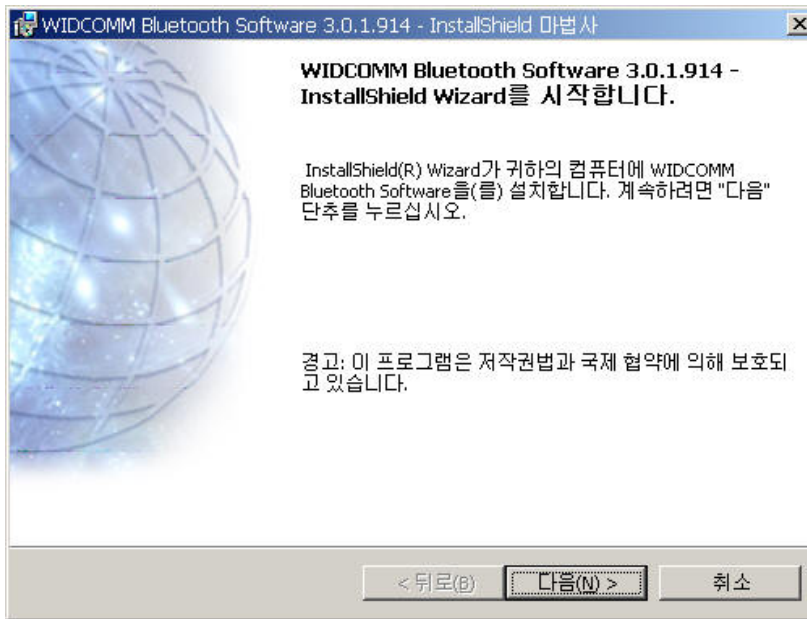
1. Windows Bluetooth 소프트웨어 설치

참고: USB 어댑터를 꽂기 전에 USB Bluetooth 소프트웨어를 설치하십시오!

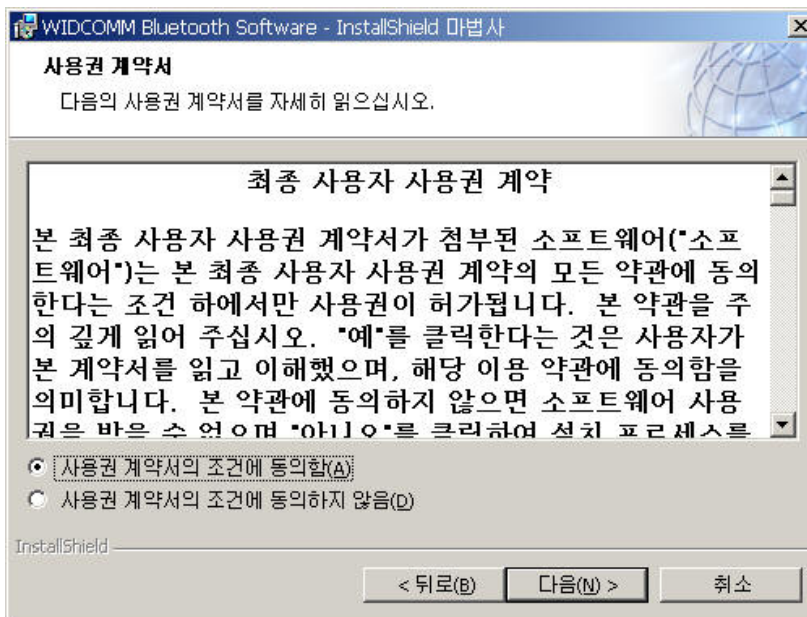
- 설치 CD를 PC의 CD-ROM 드라이브에 넣으면 자동으로 시작됩니다. 자동으로 시작되지 않으면 Windows 탐색기로 CD-ROM을 찾은 후 'autorun.exe'를 실행하십시오.



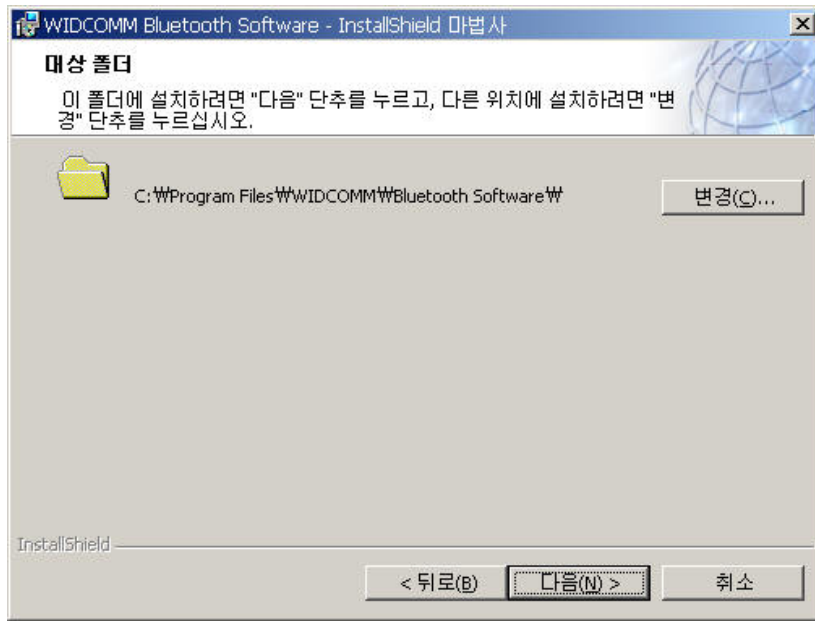
- '드라이버 및 응용 소프트웨어 설치'를 선택합니다.
- InstallShield 마법사가 시작됩니다.



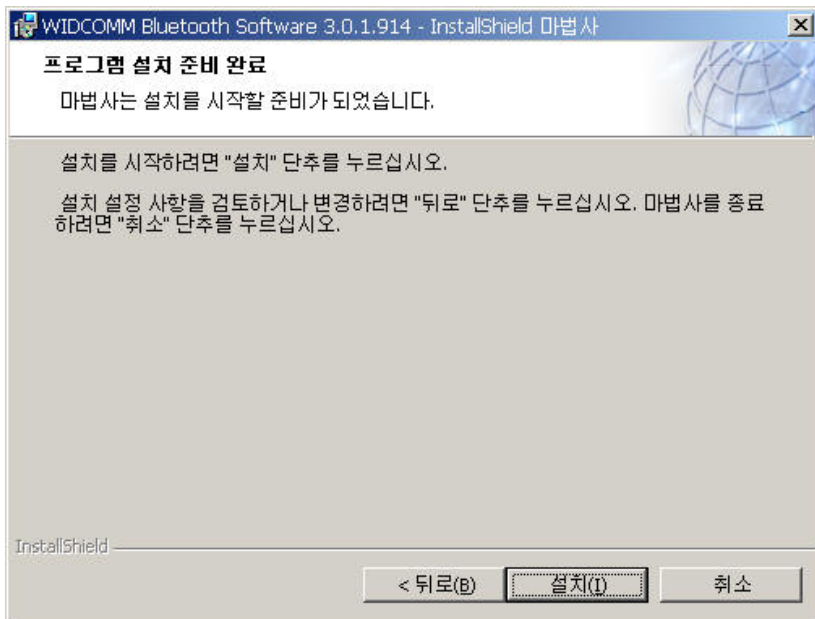
- 시작 화면에서 다음을 눌러 계속 진행합니다.



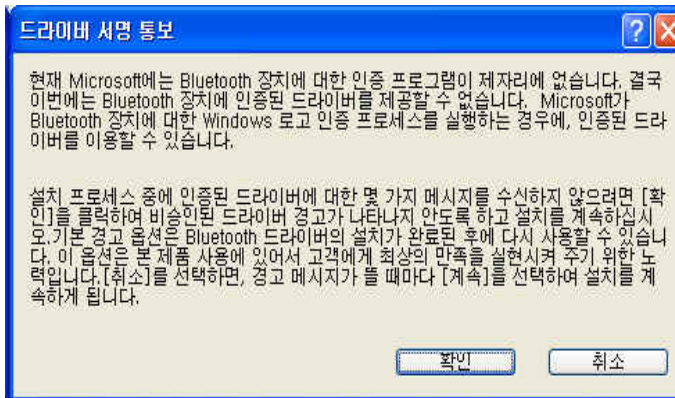
- 사용권 계약을 읽은 후 '동의함'을 선택합니다. 다음을 누릅니다.



- 기본 대상 폴더를 받아들이려면 **다음**을 누르고, Bluetooth 소프트웨어를 설치할 새 대상 폴더를 찾으려면 **변경**을 누릅니다.



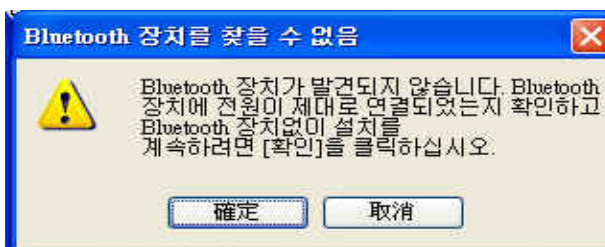
- **설치**를 눌러 Bluetooth 소프트웨어 설치를 시작합니다.



- Windows 2000/XP 사용자의 경우 "드라이버 서명 경고" 창이 나타납니다. "확인" 단추를 누르십시오.



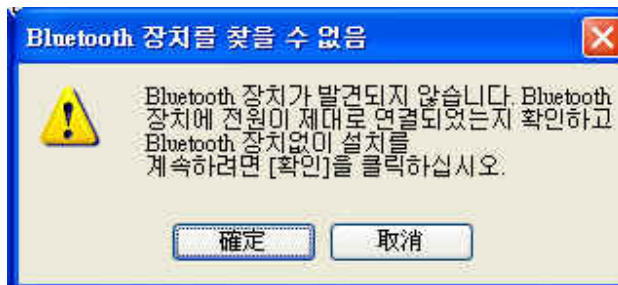
- Windows 98 사용자의 경우 Windows 98 CD-ROM 을 넣으라는 메시지의 창이 나타납니다. 원본 Windows 98 CD-ROM 을 넣고 "확인"을 누르십시오.



- "Bluetooth 장치를 찾을 수 없습니다." 창이 나타납니다. USB Bluetooth 어댑터를 USB 포트에 꽂으십시오. "확인"을 누르십시오.



- 마침을 클릭하여 Bluetooth 소프트웨어 설치를 완료합니다.



- '예'를 눌러 컴퓨터를 다시 시작하고 설치를 완료합니다.



- 시작 > (설정) > 제어판 > 시스템 > 장치 관리자를 누릅니다. '범용 직렬 버스(USB) 컨트롤러' 아래에 'USB Bluetooth 장치'가 설치되어 있는지 확인하십시오.
- 해당 정보가 없는 경우 어댑터를 뽑았다가 다시 꽂아서 드라이버를 초기화하십시오.

. Norwegian

1. Installasjon av Bluetooth-programvaren, og grunnleggende funksjoner

Installasjon av USB-adapteret

1. Installasjon av Bluetooth Windows programvare

MERK: Installer programvaren for Bluetooth enheten før du setter inn USB-adapteret!

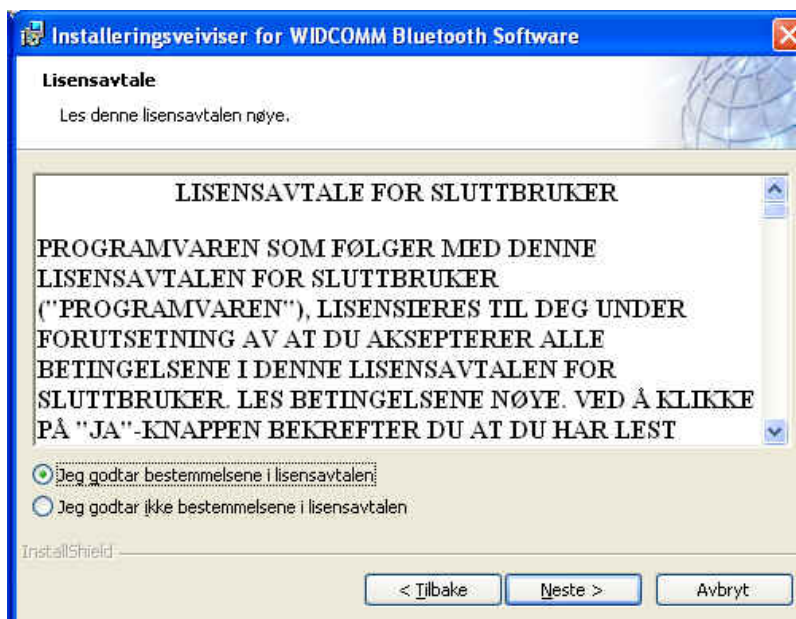
- Plasser CD-platen med installasjonsprogramvaren i maskinen. Installasjonsprogrammet vil normalt starte automatisk. Hvis programmet ikke starter, må du gå til Windows utforsker, finne CD-stasjonen og starte "**autorun.exe**".



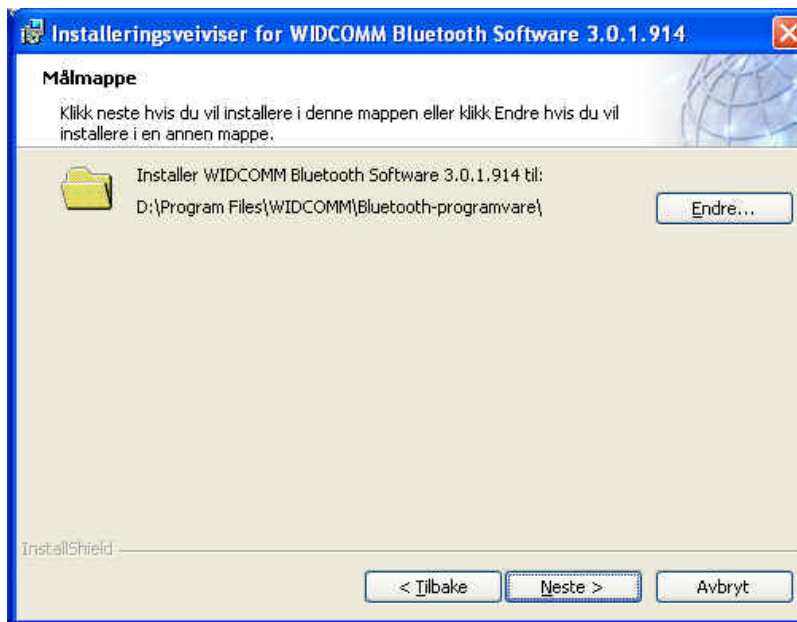
- Velg "**Installer drivere og programvare**".
- Installeringshjelperen vil starte.



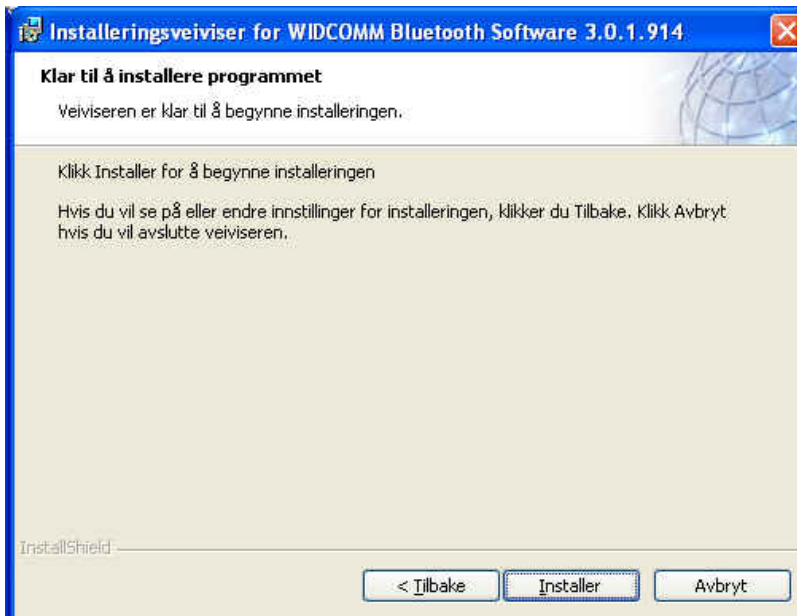
- På velkomstskjermen trykker du **Neste** for å fortsette.



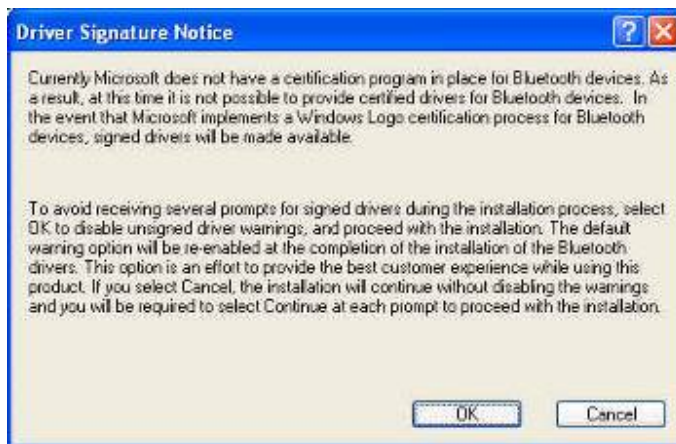
- Les igjennom lisensavtalen, og velg 'Jeg aksepterer vilkårene i denne lisensavtalen'. Klikk på **Neste**.



- Klikk på **Neste** for å akseptere standard installeringsmappe, eller klikk på **Endre** for å bla deg frem til en ny installeringsmappe for Bluetooth programvaren.



- Klikk på **Installer** for å begynne installeringen av Bluetooth programvaren.



- For brukere av Windows 2000/XP, vil et vindu med tittelen "**Driver signatormelding**" dukke opp. Når dette skjer, klikker du på "**OK**"-knappen.



- For brukere av Windows 98, vil et vindu som ber deg sette inn CD-platen for Windows 98 dukke opp. Sett inn den originale Windows 98 platen, og klikk på "**OK**".



- Vinduet "**Bluetooth-enhet ikke funnet**" dukker frem. Sett inn det USB baserte Bluetooth-adapteret i USB-porten. Klikk "**OK**".



- Klikk på **Fullfør** for å fullføre installasjonen av Bluetooth programvaren.



- Klikk på **"JA"** for å fullføre installasjonen ved å starte datamaskinen på nytt.



- Klikk på start/(innstillinger)/kontrollpanel/system/enhetsbehandling. Kontroller under "Universelle seriebus-kontrollere" at en "USB Bluetooth-enhet" er installert.
- Hvis du ikke finner dette punktet må du plugge ut USB-adapteret, for så å plugge det inn igjen for å starte driveren.

. Polish

1.Instalacja oprogramowania Bluetooth i podstawowe operacje

Instalacja adaptera USB

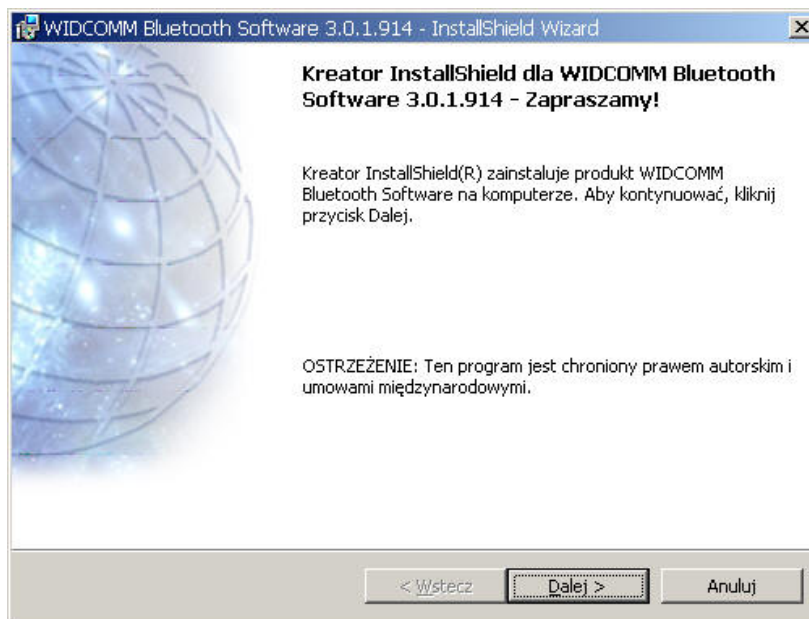
1. Instalacja oprogramowania Windows Bluetooth

UWAGA: Oprogramowanie USB Bluetooth należy zainstalować przed podłączeniem adaptera USB!

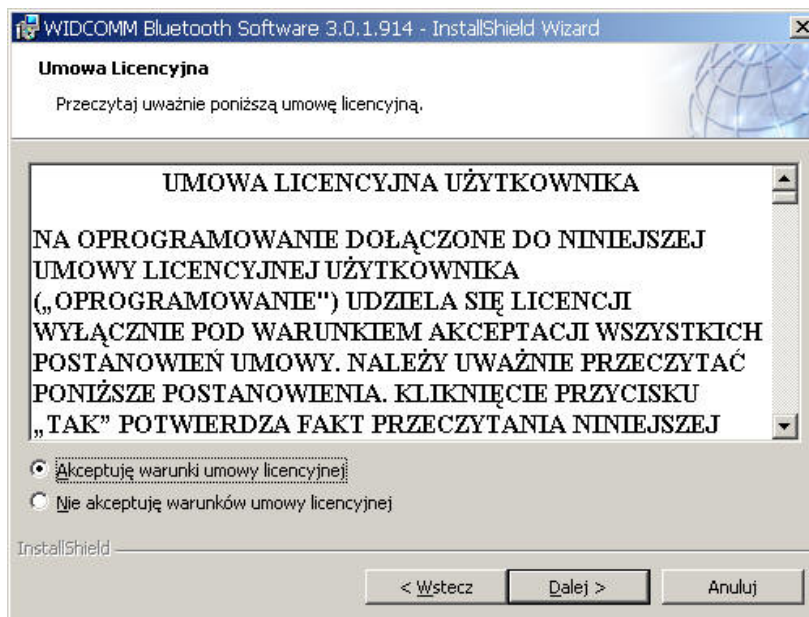
- Umieść w napędzie komputera instalacyjny dysk CD-ROM, po czym automatycznie powinien uruchomić się program instalacyjny. Jeśli program instalacyjny nie uruchomi się, przejdź do programu Eksplorator Windows, odzyskaj dysk CD-ROM i uruchom plik '**autorun.exe**'.



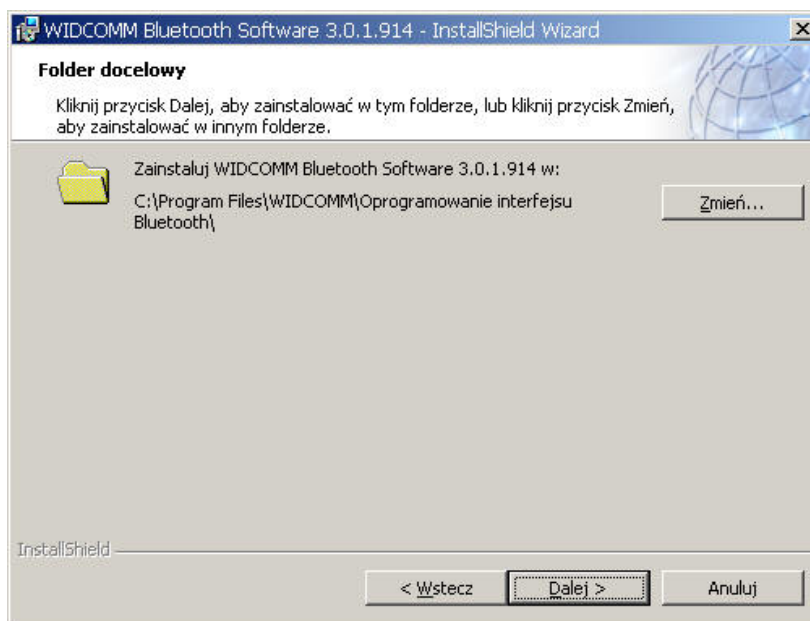
- Wybierz '**Zainstaluj sterowniki i aplikacje**'.
- Uruchomi się Kreator instalacji.



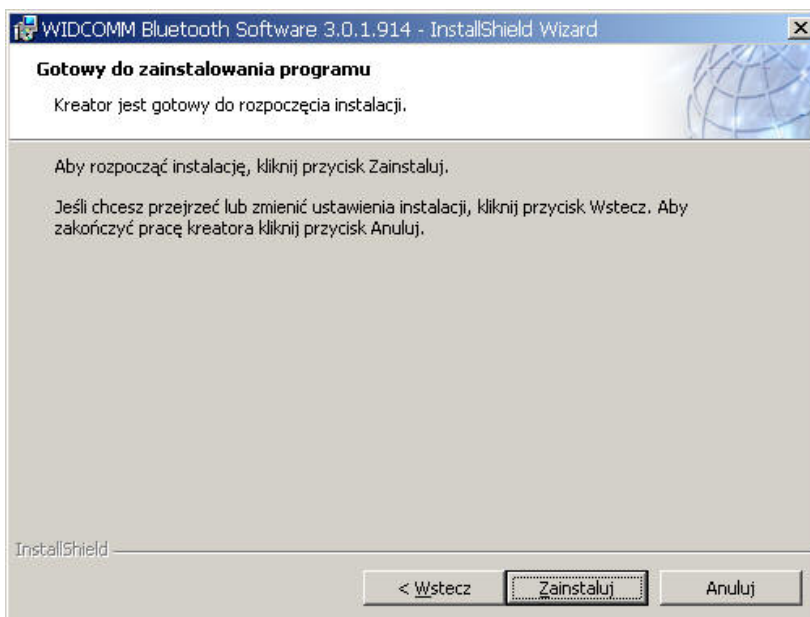
- Aby kontynuować, kliknij na ekranie powitalnym **Dalej**.



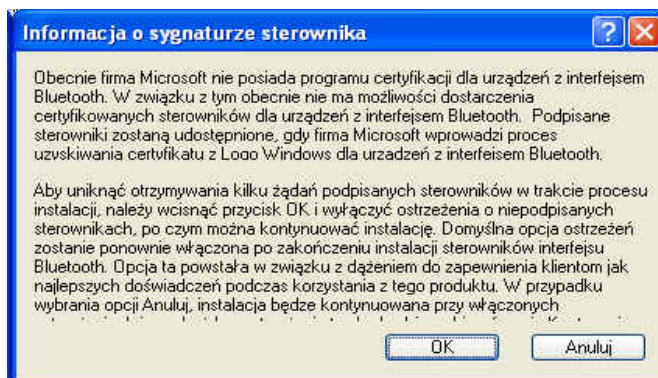
- Przeczytaj Umowę licencyjną i wybierz '**Akceptuję warunki Umowy licencyjnej**'. Kliknij **Dalej**.



- Kliknij **Dalej**, aby zaakceptować domyślny folder instalacji, kliknij **Zmień**, aby wyszukać lokalizację nowego foldera instalacji oprogramowania Bluetooth.



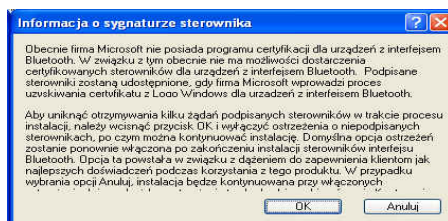
- Kliknij **Instaluj**, aby rozpocząć instalację oprogramowania Bluetooth.



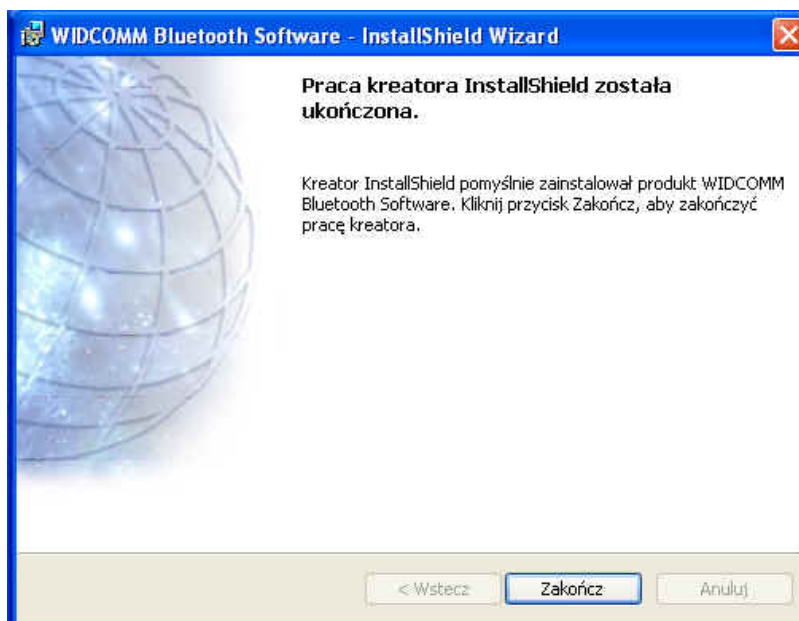
- Użytkownikom systemów operacyjnych Windows 2000/XP jest wyświetlane okno "**Uwaga dotycząca podpisu sterownika**", gdzie należy kliknąć przycisk "**OK**".



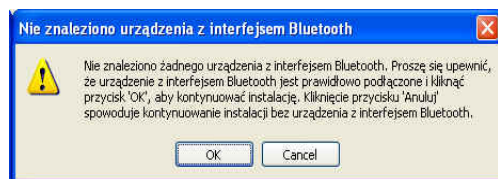
- Użytkownikom systemu operacyjnego Windows 98 jest wyświetlane okno z prośbą o włożenie dysku CD-ROM Windows 98. Należy włożyć oryginalny dysk CD-ROM Windows 98 i kliknąć "**OK**".



- Pojawi się okno "**Nie znaleziono urządzenia Bluetooth**". Podłącz do portu USB adapter USB Bluetooth. Kliknij "**OK**".



- Kliknij **Zakończ**, aby dokończyć instalację oprogramowania Bluetooth.



- Kliknij **Tak**, aby ponownie uruchomić komputer i dokończyć instalację.



- Start/(Ustawienia)/Panel sterowania/System/Menedżer urządzeń. Sprawdź w opcji 'Kontrolery uniwersalnej magistrali szeregowej', czy jest zainstalowane 'Urządzenie USB Bluetooth'.
- Jeśli brakuje tej informacji, odłącz adapter i podłącz go ponownie, w celu zainicjowania sterownika.

. Portuguese

1. Instalação do software Bluetooth e operações básicas

Instalação do adaptador USB

1. Instalação do software Bluetooth para Windows

NOTA: instale o software Bluetooth USB antes de inserir o adaptador USB.

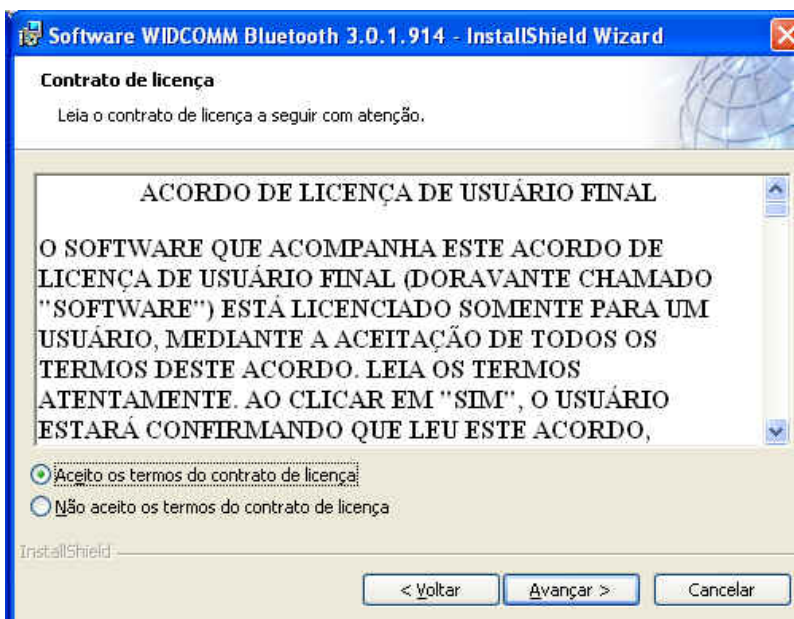
- Coloque o CD-ROM de instalação no PC; o programa deve ser iniciado automaticamente. Se o programa não for iniciado, abra o Windows Explorer e localize o arquivo '**autorun.exe**' no CD-ROM.



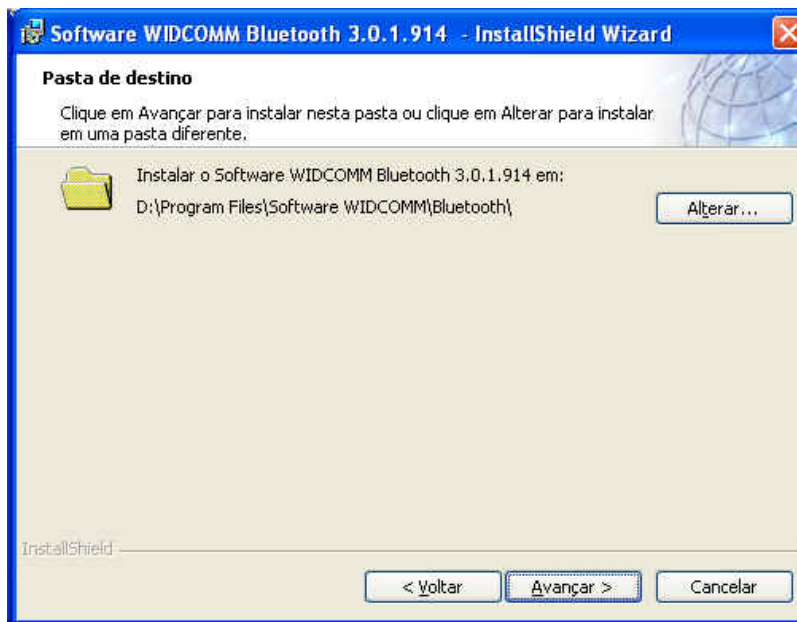
- Selecione '**Instalar os drivers e o software aplicativo**'.
- Será iniciado o InstallShield Wizard.



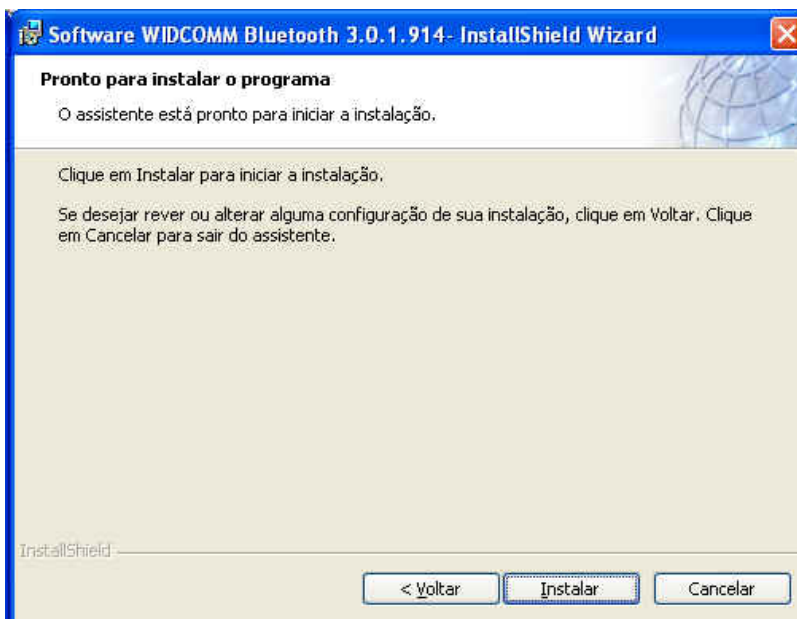
- Na tela de boas-vindas, clique em **Avançar** para continuar.



- Leia o Contrato de Licença, selecione '**Aceito os termos do Contrato de Licença**' e clique em **Avançar**.



- Clique em **Avançar** para aceitar a pasta de destino padrão, ou clique em **Alterar** para procurar uma nova pasta de destino para o software Bluetooth.



- Clique em **Instalar** para iniciar a instalação do software Bluetooth.



- No Windows 2000/XP, aparecerá a janela "**Aviso de assinatura de driver**"; clique no botão "**OK**".



- No Windows 98, aparece uma janela que pede para inserir o CD-ROM do Windows 98. Insira o CD-ROM original do Windows 98 e clique em "**OK**".



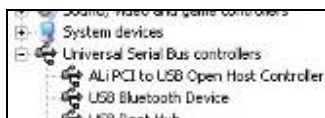
- Aparecerá a janela "**Dispositivo Bluetooth não encontrado**". Insira o adaptador USB Bluetooth na porta USB e clique em "**OK**".



- Clique em **Concluir** para completar a instalação do software Bluetooth.



- Clique em '**Sim**' para reiniciar o computador e concluir a instalação.



- Clique em Iniciar / Configurações / Painel de controle / Sistema / Gerenciador de dispositivos. Sob 'Controladores Universal Serial Bus', verifique se um dispositivo Bluetooth USB (USB Bluetooth Device).
- Se a informação estiver ausente, desconecte o adaptador e volte a conectá-lo para iniciar o controlador.

. Swedish

1. Installation av Bluetooth-programvara och grundläggande användning

Installation av USB-adaptorn

1. Installation av Windows Bluetooth-programvara

OBS: Du måste installera programvaran för USB Bluetooth innan du ansluter USB-adaptorn!

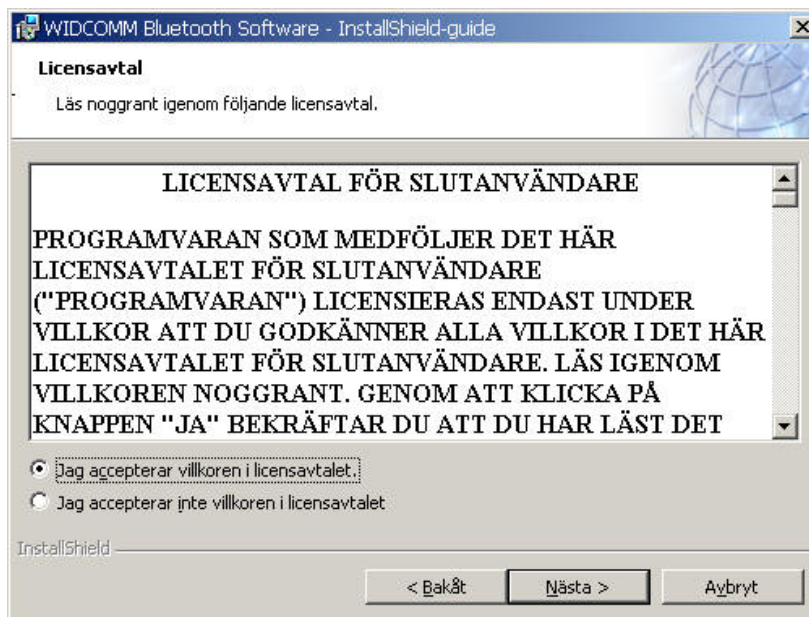
- Sätt in installations-CD-skivan i datorns CD-läsare. Installationsprogrammet bör starta automatiskt. Om installationen inte kommer igång, starta Utforskaren i Windows, lokalisera CD-enheten och CD-skivan och kör programmet "**autorun.exe**"



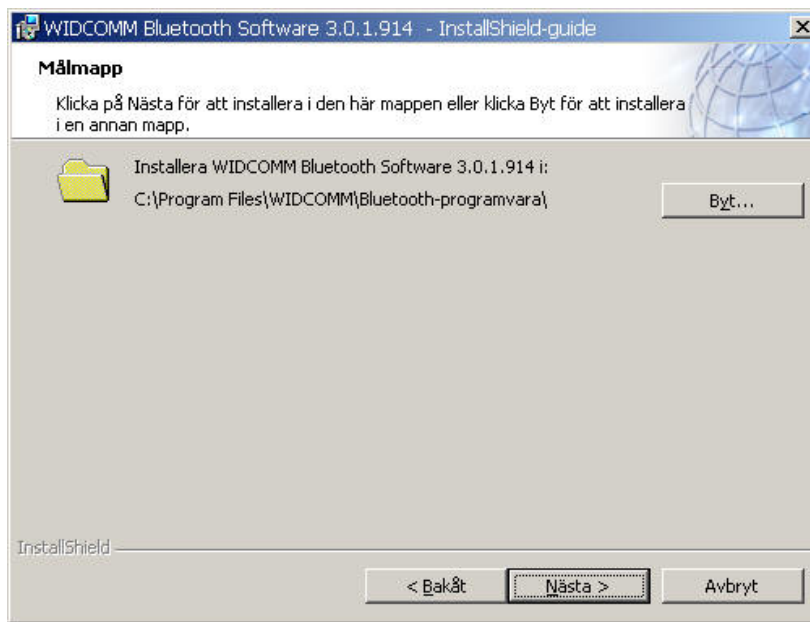
- Välj "**Installera drivrutiner och applikationsprogramvara**".
- Guiden InstallShield startas.



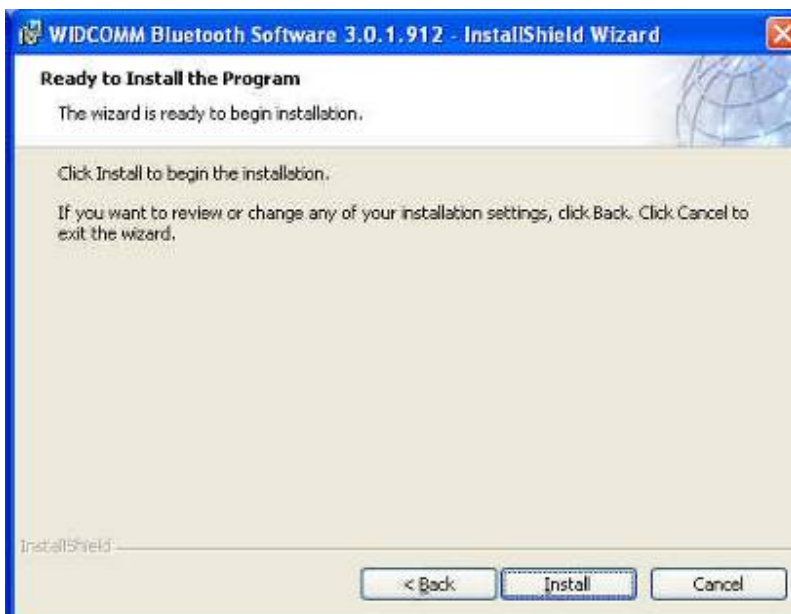
- På Välkomstskärmen som visas klickar du på "**Nästa**" för att fortsätta.



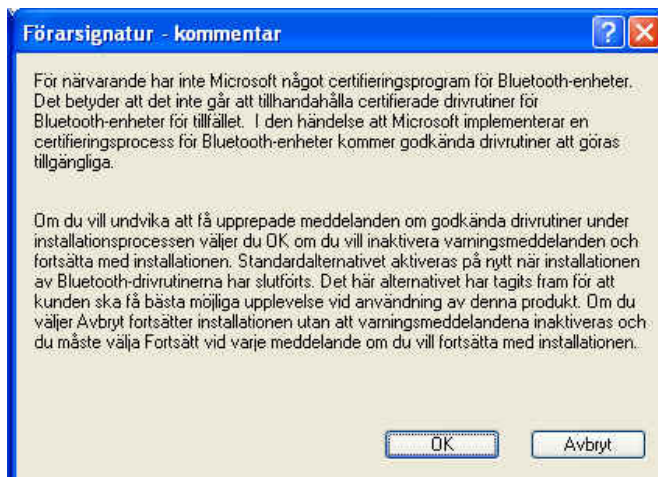
- Läs igenom licensavtalet och välj "**Jag accepterar villkoren i licensavtalet**". Klicka på "**Nästa**".



- Klicka på "**Nästa**" om du accepterar den standardmässiga destinationsmappen, eller klicka på "**Ändra**" för att bläddra till en annan destinationsmapp för Bluetooth-programvaran.



- Klicka på "**Installera**" för att påbörja installationen av Bluetooth-programvaran.



- Om du använder Windows 2000 eller XP visas fönstret "**Meddelande om signatur för drivrutin**". Klicka då på knappen "**OK**".



- Om du använder Windows 98 visas ett fönster där du blir ombedd sätta in CD-skivan för Windows 98. Sätt in original-CD-skivan för Windows 98 och klicka på "**OK**".



- Fönstret "**Bluetooth-enhet hittades inte**" visas. Sätt in USB Bluetooth-adaptorn i USB-porten. Klicka på "**OK**".



- Klicka på "**Slutför**" för att slutföra installationen av Bluetooth-programvaran.



- Klicka på "**Ja**" för att starta om datorn och slutföra installationen.



- Klicka på Start/(Inställningar)/Kontrollpanelen/System/Enhetshanteraren. Kontrollera vid raden "USB-styrenheter (Universal Serial Bus)" att en "USB Bluetooth-enhet" är installerad.
- Om du inte hittar denna information kopplar du ur adaptorn och kopplar in den igen för att initiera drivrutinen.

. Russian

1. Установка программного обеспечения Bluetooth и основные принципы действия

Установка USB адаптера

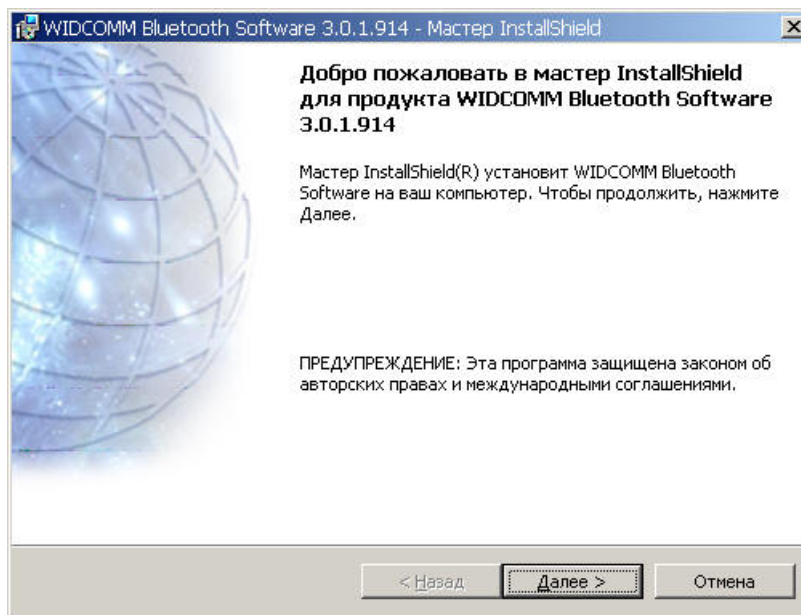
1. Установка программного обеспечения Bluetooth в среде Windows

ЗАМЕЧАНИЕ: Пожалуйста, устанавливайте программное обеспечение для USB Bluetooth перед тем как вставить USB адаптер!

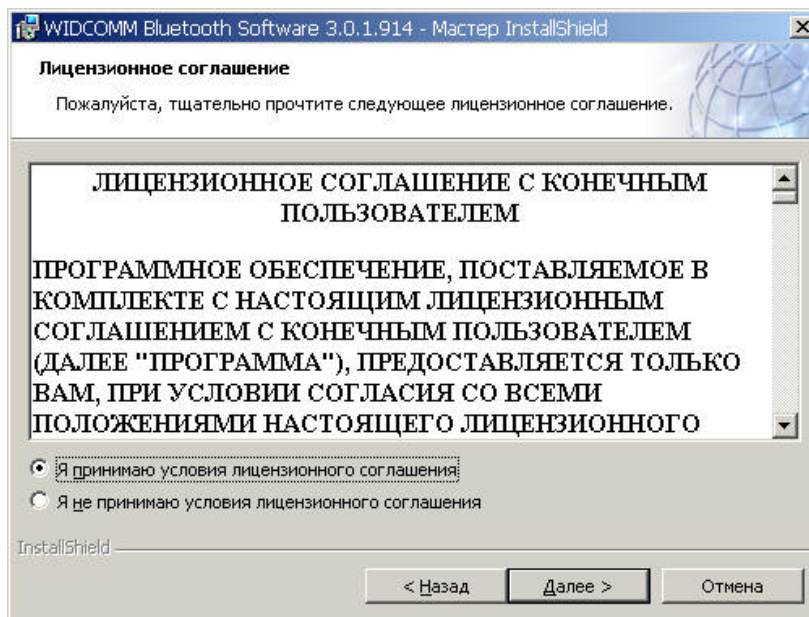
- Вставьте CD-ROM с установкой программы в компьютер, программа установки запустится автоматически. Если не запустится программа установки, пожалуйста, откройте Проводник Windows, найдите CD-ROM и запустите `'autorun.exe'`.



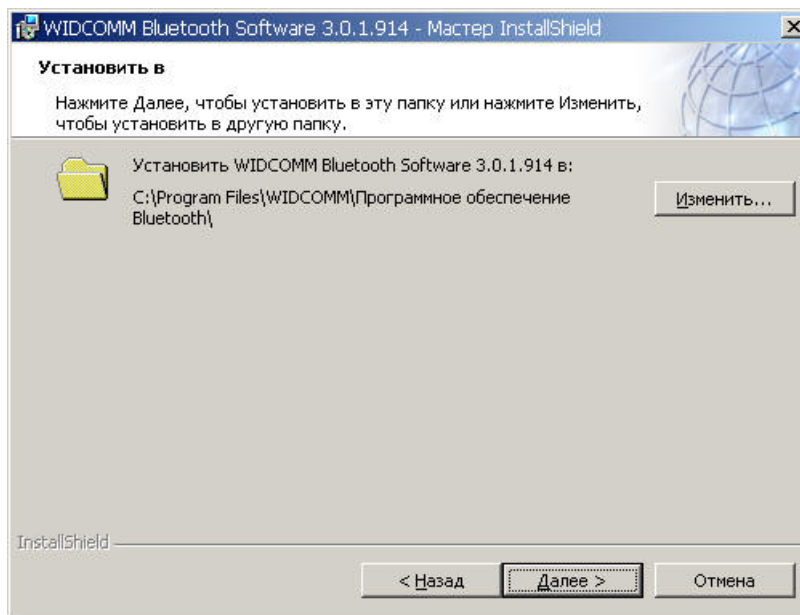
- Выберите **"Установить драйверы и Программное обеспечение приложения"**.
- Запустится режим мастера установки.



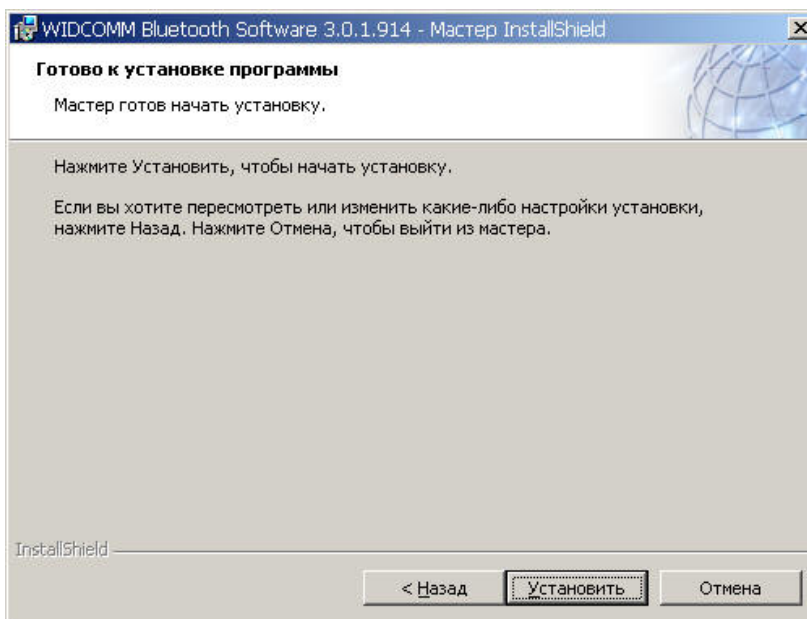
- На окошке приветствия, нажмите "**Далее**", для продолжения.



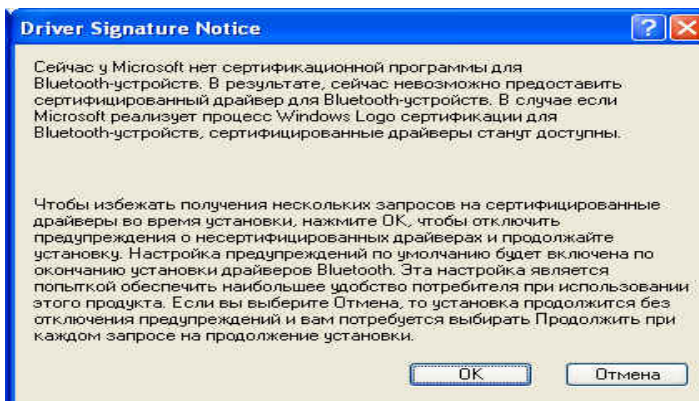
- Прочитайте Лицензионное соглашение и выберите "**Я соглашаюсь со всеми условиями, изложенными в лицензионном соглашении**". Нажмите "**Далее**".



- Нажмите **“Далее”**, чтобы подтвердить путь папки, указанный по умолчанию, нажмите **“Изменить”**, чтобы выбрать новый путь для папки программного обеспечения Bluetooth.



- Нажмите **“Установить”**, чтобы начать установку программного обеспечения Bluetooth.



- Для пользователей Windows 2000/XP, появится окно "**Замечание о подписании драйвера**", пожалуйста, нажмите кнопку "**ОК**".



- Для пользователей Windows 98, появится окно, которое попросит вас вставить диск с установкой Windows 98. Вставьте диск с оригинальным Windows 98 и нажмите "**ОК**".



- Появится окно "**Bluetooth устройство не найдено**". Вставьте адаптер USB Bluetooth в порт USB. Нажмите "**ОК**".



- Нажмите "**Конец**", чтобы завершить установку программного обеспечения Bluetooth.



- Нажмите "**ДА**" для того, чтобы перезапустить компьютер и завершить процесс установки.



- Нажмите Пуск/(Установки)/Панель управления/Система/Менеджер устройств. Проверьте, установлен ли под закладкой "Контроллеры универсальной последовательной шины" соответствующее "Устройство USB Bluetooth".
- Если данных по этому устройству нет, пожалуйста, отключите адаптер и затем вставьте адаптер для того, чтобы загрузить драйвер.

. Spain

1. Instalación del software Bluetooth y funciones básicas

Instalación del adaptador USB CN-500/CN-502

1. Instalación del software Bluetooth en Windows

NOTA: ¡Por favour, instale el software Bluetooth USB antes de enchufar el adaptador USB!

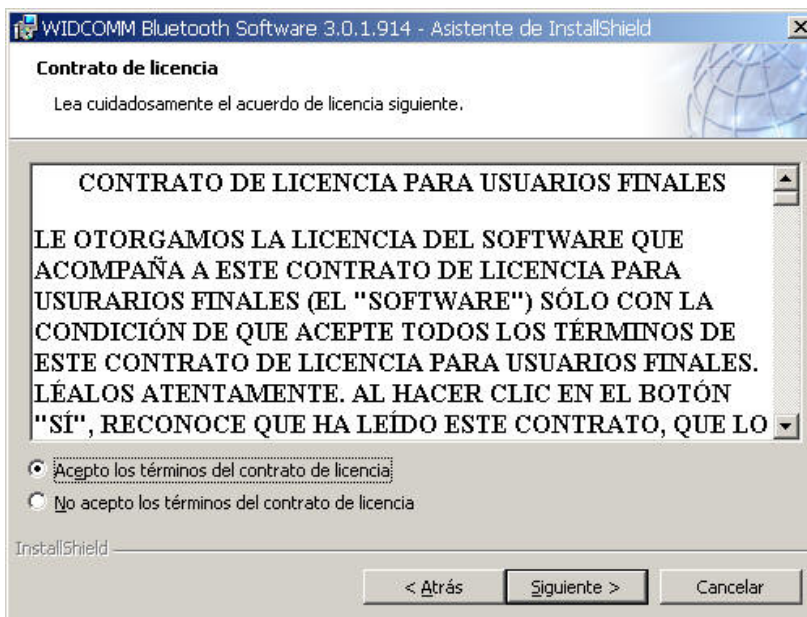
- Coloque el CD-ROM de instalación en el PC, la instalación debería comenzar automáticamente. Si la instalación no se inicia, vaya al Explorador de Windows para localizar el CD-ROM y ejecute "**autorun.exe**".



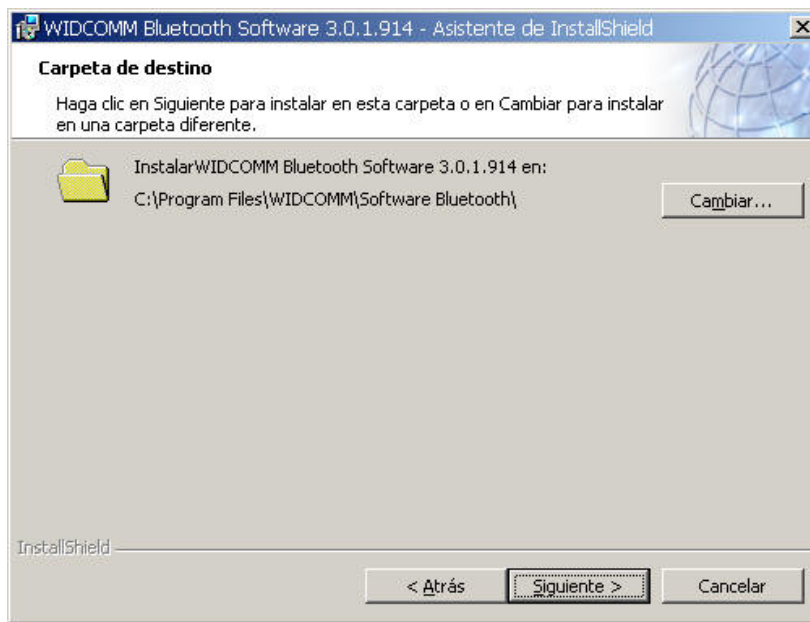
- Elija "**Install Drivers and Application Software**".
- Se iniciará el Asistente InstallShield.



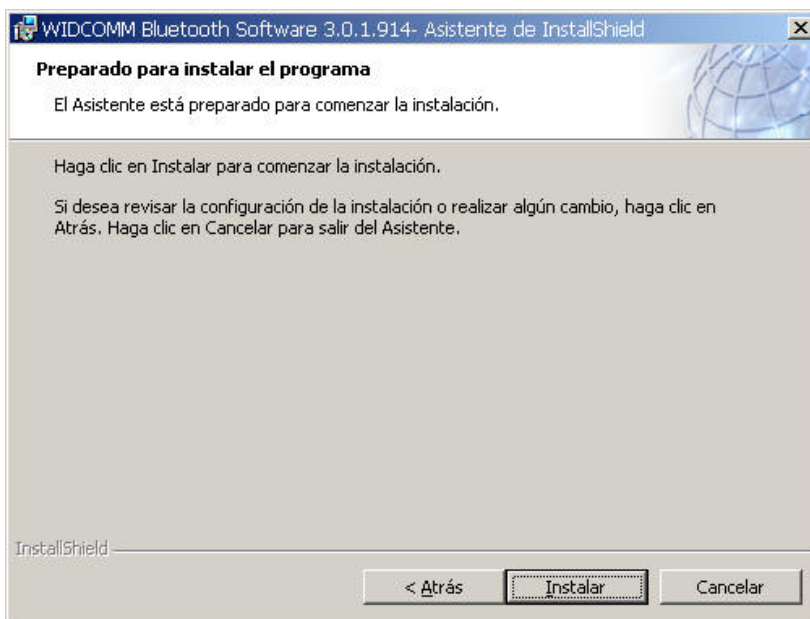
- En la pantalla, haga clic en **"Siguiente"** para continuar.



- Lea el Acuerdo de licencia y seleccione **"Acepto los términos del contrato de licencia"**. Haga clic en **"Siguiente"**.



- Haga clic en "**Siguiente**" para aceptar la carpeta de destino predeterminada o haga clic en "**Cambiar...**" para buscar una nueva carpeta de destino para el software Bluetooth.



- Haga clic en "**Instalar**" para comenzar la instalación del software Bluetooth.



- Para los usuarios de Windows 2000/XP, aparecerá una ventana **"Información de la firma del controlador"**, haga clic en el botón **"Aceptar"**.



- Para los usuarios de Windows 98, aparecerá una ventana que le pedirá que inserte el CD-Rom de Windows 98. Inserte el CD-Rom original de Windows 98 y haga clic en **"OK"**.



- Aparecerá la ventana **"No se encontró el dispositivo Bluetooth"**. Conecte el adaptador Bluetooth USB en el Puerto USB. Haga clic en **"OK"**.



- Haga clic en "**Finalizar**" para completar la instalación del software Bluetooth.



- Haga clic en "**Sí**" para reiniciar el ordenador y completar la instalación.



- Haga clic en inicio/(configuración)/panel de control/sistema/administrador de dispositivos. Verifique que bajo 'Controladores de Bus Serie Universal' haya instalado un 'Dispositivo Bluetooth USB'.
- Si esta información no está presente, desenchufe el adaptador. A continuación vuelva a enchufarlo para iniciar el controlador.

. Simplified Chinese

蓝牙软件安装手册

1. Windows 蓝牙软件安装

注意：在使用蓝牙配接器之前，请先安装 Widcomm 的 Windows 版蓝牙软件 (BTW)。

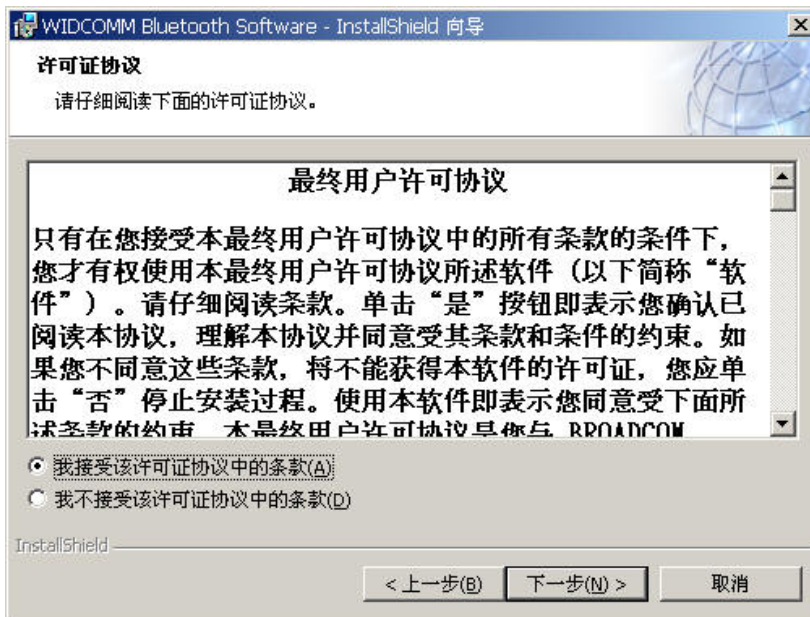
- 插入光盘片至计算机中，软件的主选单画面会自动出现；如果安装程序没有开始，请至光盘片中执行“autorun.exe”。



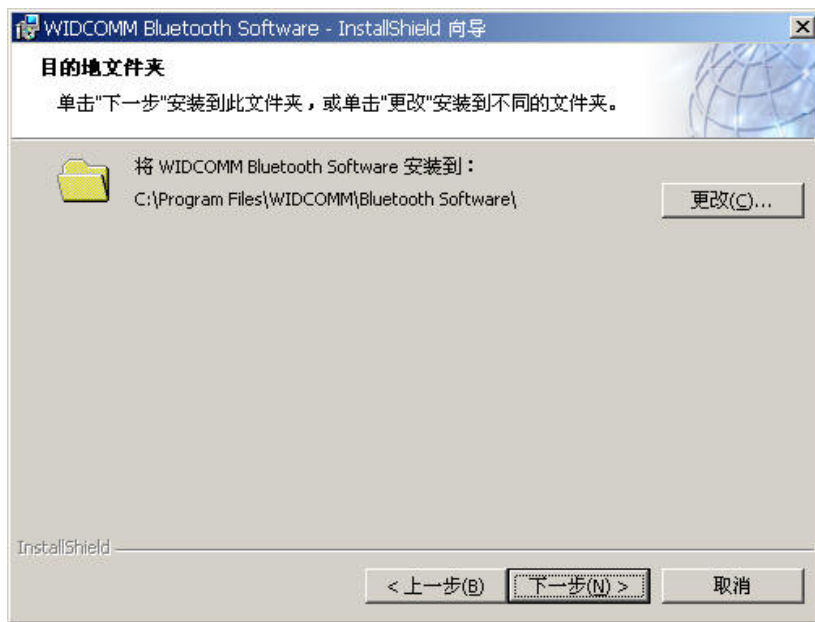
- 选择并按下 'Install Drivers and Application Software'.
- 安装精灵将会激活



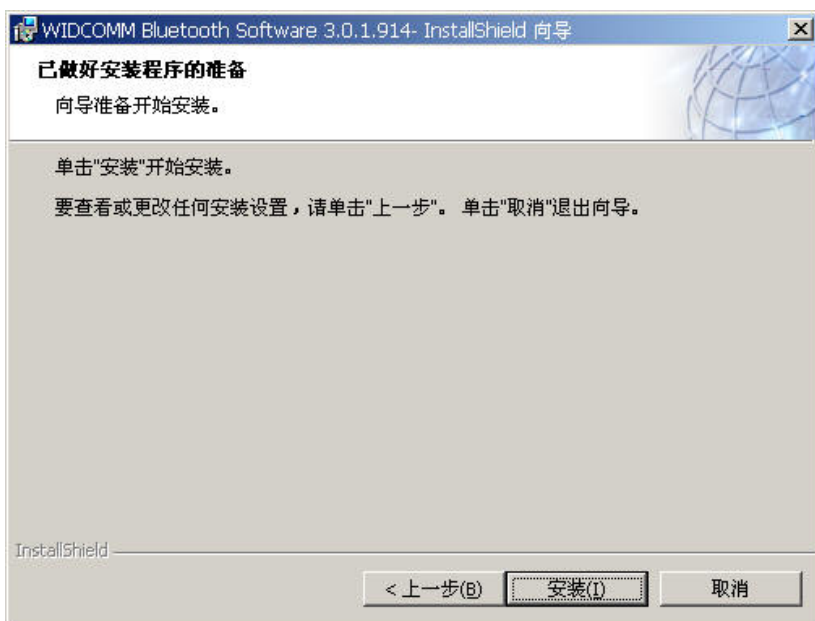
- 在欢迎画面中按” 下一步” 继续安装



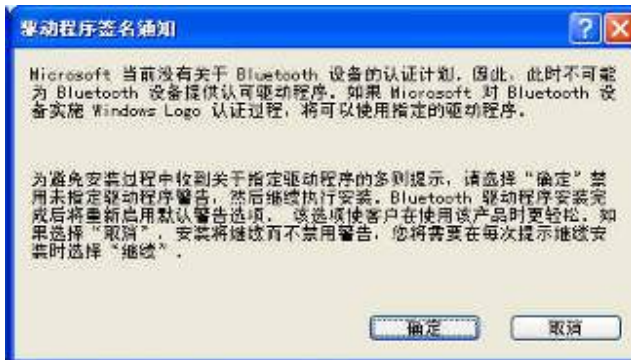
- 阅读版权同意内容，并选取'I accept the terms in the license agreement'. 按” 下一步”



- 按” 下一步” ， 接受预设的安装目录， 或是按下” 变更” 浏览您所想要新的蓝芽软件的安装目录



按下” 安装” ， 开始安装蓝芽软件



- 针对 Windows 2000/XP 的使用者，"Driver Signature Notice" 窗口会出现，请按下 "是" 按钮。



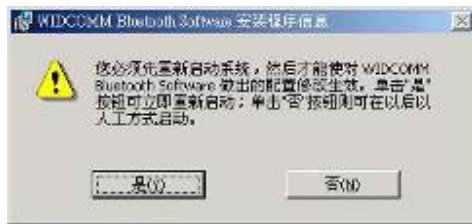
- 对于 Windows 98 使用者，将出现请您插入 Windows 98 的光盘片的画面；插入原始的 Windows 98 光盘片并按下"是"。



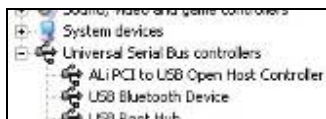
- 出现"未发现蓝芽装置"窗口，请插入 USB 蓝芽配接器至计算机的 USB 埠中，按"是"



- 按下”完成”以完成蓝牙软件安装



-
- 按下”是”重新激活计算机并完成安装



- 按下 开始/设定/控制台/系统/装置管理员；在'**Universal Serial Bus controllers**' 下确认 '**USB Bluetooth Device**' 已经完成安装。
- 如果没有出现上述信息，请拔下蓝牙配接器；重新插入配接器以初始化驱动程序。

. Traditional Chinese

藍芽軟體安裝手冊

1. Windows 藍芽軟體安裝

注意：在使用藍芽配接器之前，請先安裝 Widcomm 的 Windows 版藍芽軟體 (BTW)。

- 插入光碟片至電腦中，軟體的主選單畫面會自動出現；如果安裝程式沒有開始，請至光碟片中執行” autorun.exe”。



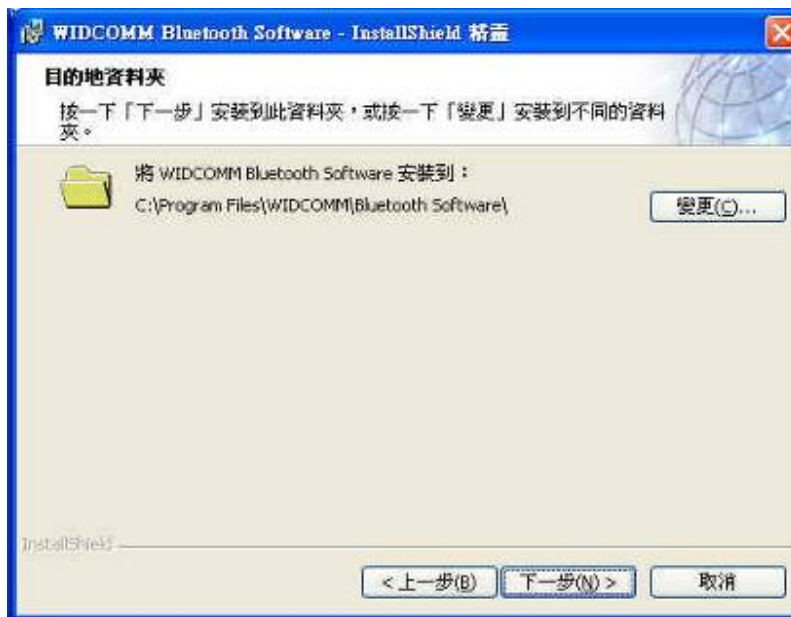
- 選擇並按下 'Install Drivers and Application Software'.
- 安裝精靈將會啟動



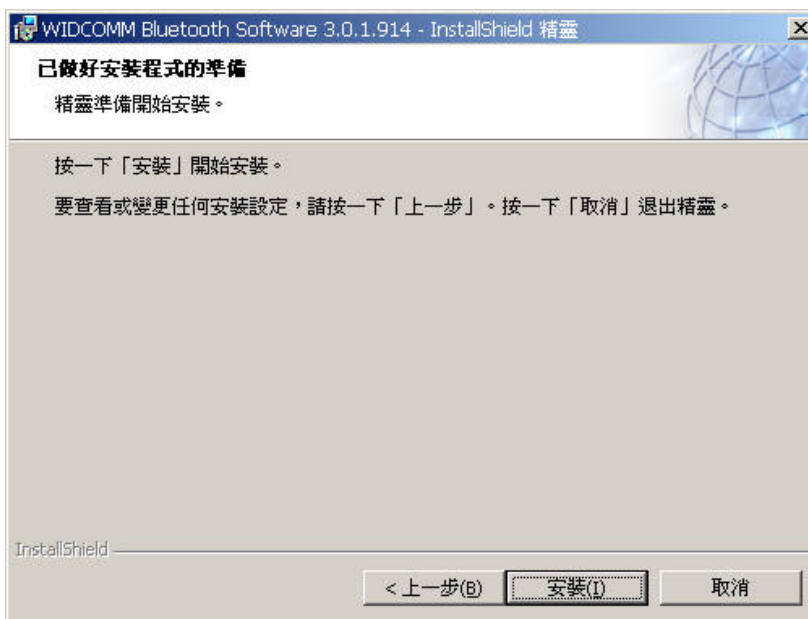
- 在歡迎畫面中按” 下一步” 繼續安裝



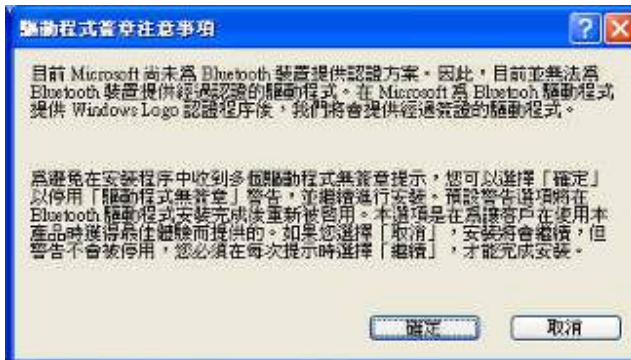
- 閱讀版權同意內容，並選取'I accept the terms in the license agreement'. 按” 下一步”



- 按”下一步”，接受預設的安裝目錄，或是按下”變更”瀏覽您所想要新的藍芽軟體的安裝目錄



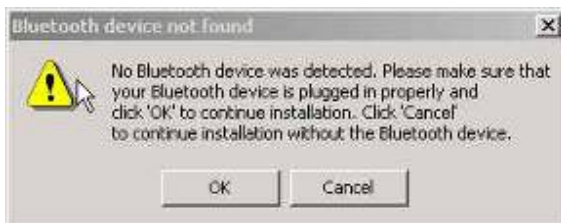
按下”安裝”，開始安裝藍芽軟體



- 針對 Windows 2000/XP 的使用者，"Driver Signature Notice" 視窗會出現，請按下 "是" 按鈕。



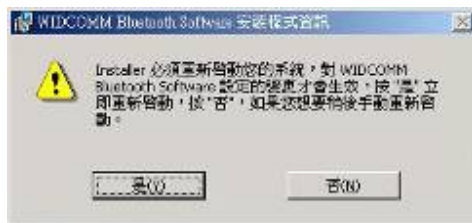
- 對於 Windows 98 使用者，將出現請您插入 Windows 98 的光碟片的畫面；插入原始的 Windows 98 光碟片並按下 "是" 。



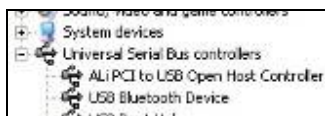
- 出現 "未發現藍芽裝置" 視窗，請插入 USB 藍芽配接器至電腦的 USB 埠中，按 "是" 。



- 按下”完成” 以完成藍芽軟體安裝



- 按下”是” 重新啟動電腦並完成安裝



- 按下 開始/設定/控制台/系統/裝置管理員；在'**Universal Serial Bus controllers**' 下確認 '**USB Bluetooth Device**' 已經完成安裝。
- 如果沒有出現上述資訊，請拔下藍芽配接器；重新插入配接器以初始化驅動程式。